

Mosaic

Touch Screen Control Device

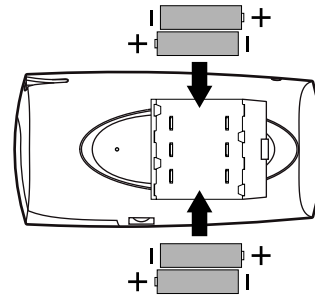
User's Guide



MOSAIC QUICK START

INSTALL BATTERIES

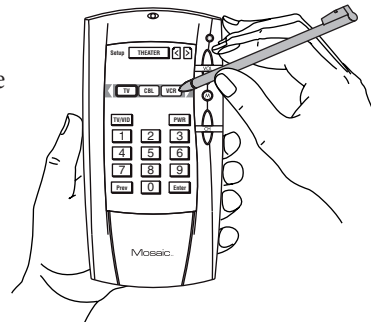
1. On Mosaic's back side, push the tab and lift off the battery cover.
2. Obtain four (4) new AA alkaline batteries. Match the + and - marks on the batteries to the + and - marks in the battery case. Then insert the new batteries, as shown on right.
3. Align the cover's keys with the opening's holes and press the cover back into place.
4. You will see the Mosaic *Welcome* screen, followed by the *Device* screen.



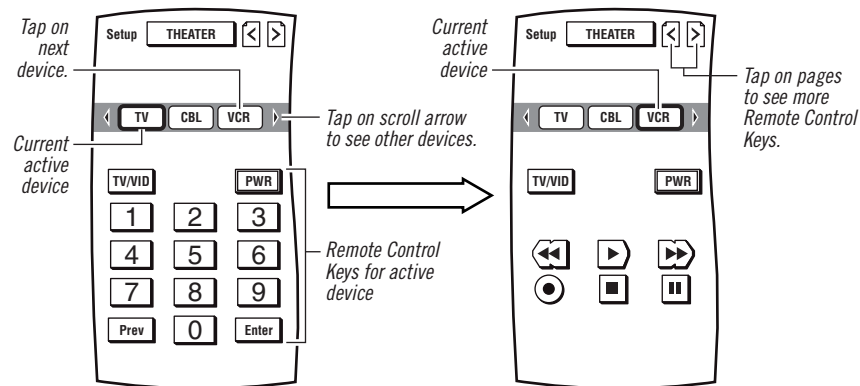
USING THE TOUCH SCREEN

Mosaic features a *Touch Screen* that responds to touch commands, whether you use the supplied *Stylus* or your finger tip. Each time you tap on the screen, you'll see the LED blink and hear a beep tone, which serve as visual and audio confirmation of your command.

After 20 seconds of inactivity, Mosaic will turn off the LCD screen to conserve battery life.



CONTROLLING DEVICES



Mosaic™

Touch Screen Control Device
User's Guide

MOSAIC

Table Of Contents

CHAPTER 1: INTRODUCTION	7
OVERVIEW	7
PRODUCT SUMMARY	7
EASE OF USE	7
PERSONALIZATION	8
COMPATIBILITY	8
ERGONOMIC DESIGN	9
ABOUT THIS GUIDE	9
ORGANIZATION	9
CONVENTIONS	9
 CHAPTER 2: GETTING STARTED	 11
OVERVIEW	11
ABOUT BATTERIES	11
INSTALLING BATTERIES	11
LOW-BATTERY INDICATOR	13
HOW TO USE MOSAIC	14
LOCATIONS OF CONTROLS AND CONNECTIONS	14
USING THE HARD KEYS	16
USING THE TOUCH SCREEN	16
USING THE SETUP HELP SCREENS	20
 CHAPTER 3: SETTING UP MOSAIC	 21
OVERVIEW	21
SETUP BY BRAND	21
SETUP BY SEARCH	27
SETUP BY CODE	31
DELETING A DEVICE	34
ADDING NEW CODES	35
ABOUT LOCKING SETTINGS	38
 CHAPTER 4: PERSONALIZING MOSAIC	 39
OVERVIEW	39
USING MACROS	39
ADDING A MACRO	39

USER'S GUIDE

VIEWING MACROS	43
COPYING MACROS	44
DELETING A MACRO	45
DELETING ALL MACROS	46
USING KEY MOVER	47
MOVING A KEY	47
DELETING ALL MOVED KEYS	50
USING LEARNING	51
LEARNING A FUNCTION	51
DELETING ALL LEARNED FUNCTIONS	53
LABELING KEYS	54
LABELING DEVICE KEYS	54
LABELING FUNCTION KEYS	55
USING KEY MAGIC	58
ADDING A KEY MAGIC FUNCTION	58
DELETING ALL KEY MAGIC FUNCTIONS	61
USING VOLUME LOCK	62
LOCKING THE VOLUME	62
UNLOCKING THE VOLUME	64
USING VIEW/DELETE	65
HOME THEATER	67
PROGRAMMING HOME THEATER DEVICES	67
PROGRAMMING THE HOME THEATER POWER MACRO	70
VIEWING THE HOME THEATER POWER MACRO	71
DELETING THE HOME THEATER POWER MACRO	71
CHAPTER 5: MOSAIC SYSTEM	73
OVERVIEW	73
UPGRADING CODES	73
UPGRADING CODES USING YOUR PC	73
UPGRADING CODES USING YOUR TELEPHONE	76
ALIGNING THE LCD	77
SOUND CONTROL	79
LOCK SETTINGS	80
RESETTING THE SYSTEM	81
ABOUT MOSAIC	82
SPECIFICATIONS	83

MOSAIC

FCC NOTICE

This equipment has been tested and found to comply with the limits for a Class B digital device, pursuant to part 15 of the FCC Rule. These limits are designed to provide reasonable protection against harmful interference in residential installation. This equipment generates, uses, and can radiate radio frequency energy and, if not installed and used in accordance with the instructions, may cause harmful interference to radio communications. However, there is no guarantee that interference will not occur in a particular installation. If this equipment does cause harmful interference to radio or television reception, which can be determined by turning the equipment off and on, the user is encouraged to try to correct the interference by one or more of the following measures:

- Reorient or relocate the receiving antenna.
- Increase the separation between the equipment and receiver.
- Connect the equipment into an outlet on a different circuit from the receiver. Consult the dealer or an experienced radio/TV technician for help.

NOTE: If serial or parallel ports are configured, a filtered/shielded serial or parallel cable is recommended to minimize EMI and ensure FCC B compliance.

This device complies with Part 15 of the FCC rules. Operation is subject to the following two conditions:

1. This device may not cause harmful interference.
2. This device must accept any interference received, including interference that may cause undesired operation.

Changes or modifications not expressly approved by the party responsible for compliance void the user's authority to operate the equipment.

ADDITIONAL INFORMATION

Mosaic does not have any user-serviceable parts. Opening the case, except for the battery cover, may cause permanent damage to your Mosaic. For help with upgrading your Mosaic codes via the Internet, see *Chapter 5: Mosaic System – About Mosaic* on page 82.

MOSAIC™ Touch Screen Control Device
 Designed with UEI TechnologySM
 U.S. Patents
 5,414,761 5,552,917 5,228,077
 5,255,313 5,698,353 5,959,751
 5,515,052 5,537,463 5,614,906
 6,014,092 and other patents pending

©2000 by Universal Electronics Inc. No part of this publication may be reproduced, transmitted, transcribed, stored in any retrieval system, or translated to any language, in any form or by any means, electronic, mechanical, magnetic, optical, manual, or otherwise, without the prior written permission of Universal Electronics Inc.

USER'S GUIDE

UEI's policy is one of ongoing product revision and improvement. UEI thus reserves the right to make changes to its products or product specifications at any time and without prior notice. The information contained in this publication has been carefully checked and is believed to be accurate at the time of publication. However, UEI assumes no responsibility for errors or omissions, or for any consequences resulting from the use of the information contained therein.

The Mosaic logo is a trademark of Universal Electronics Inc. UEI Technology is a service mark of Universal Electronics Inc. The Universal Electronics logo is a registered trademark of Universal Electronics Inc. All other brand or product names are trademarks or registered trademarks of their respective companies or organizations.

Manual-M2000 rev2

9/01

MOSAIC
NOTES

Chapter 1: Introduction

OVERVIEW

This chapter provides a product and feature summary for the Mosaic™ Touch Screen Control Device by Universal Electronics. At the end, you'll also find a section on how this user's guide is organized and an explanation of its conventions.

PRODUCT SUMMARY

It's hard to believe that a remote control this advanced could also be this easy. With Mosaic™ by Universal Electronics, you can personalize different screens to access and operate any home entertainment system according to your needs. Our patented features and proprietary software, such as learning, macros, *Key Mover*, and *Key Magic*, make it all possible.

Like everything else from Universal Electronics, Mosaic includes the world's largest infrared code library, so it's compatible with virtually everything. Moreover, its patented upgradeability means it won't be obsolete tomorrow.

EASE OF USE

From the easy-to-view large touch screen and convenient home theater mode, to the ready-to-use dynamically-generated device screens, you will find Mosaic is the most user-friendly control device on the market. Ease-of-use features include:

- Dynamically-generated device keys that are based on a specific device code to ensure you will not need to modify keys for each device.
- Control of up to 15 devices so you can set up any combination of up to 15 device types, complete with appropriate keys per selected device.
- Easy device setup so you can program Mosaic by device code, by device search, or by brand, for fast device setup.
- A home theater mode that combines different device applications under one mode for operating convenience.

continued on next page...

MOSAIC

PRODUCT SUMMARY

EASE OF USE (CONTINUED)

- Help screens that include setup and operational instructions, minimizing the need for you to continually reference the instruction manual.
- User feedback to confirm action by visual and sound feedback (on/off option).
- Lock control to prevent accidental erasing of device codes and user personalization.
- On-screen low battery indicator to advise you when batteries are low.
- Non-volatile memory to ensure Mosaic will not lose programming, even when the batteries are removed.

PERSONALIZATION

As a result of our proprietary software and patented features, Mosaic provides the most extensive personalization features available today. In fact, you can personalize them right on the remote control instead of having to use complicated personal computer editing programs and connection cords. With the assistance of our integrated help screens, you can sit comfortably in the living room and tailor Mosaic to fit your specific needs.

Personalization features include:

- A learning feature that uses our proprietary learning capability, allowing a user to add a function from another remote control, assign it a special key, label that key, and place it on the screen of their choice.
- Up to 21 macro keys that can be programmed with up to 32 independent user-defined keystrokes each.
- Our patented *Key Mover*, which allows keys to be copied from one device to another, or to a different position in the same device mode.
- Our patented *Key Magic*, which provides you with an alternative way to add functional codes to keys.
- Alpha/numeric and symbol keyboard that allows you to label and re-label keys using letters, numbers, and a wide range of symbols.

COMPATIBILITY

Mosaic comes pre-programmed with the world's largest and most efficient database of infrared codes for device compatibility. It is further enhanced by UEI's patented upgradeability features:

USER'S GUIDE

- Infrared code compatibility with the following devices: TV, Cable, VCR, Audio, Accessories, Satellite, CD, Mini Disc, Amplifier, Misc. Audio, Tuner, Phono, DVD, Audio Cassette, Home Automation, and Laser Disc.
- Electro-magnetic coupling that allows downloading by modem for an “in home” consumer upgrade via telephone or PC speakers to ensure ongoing compatibility in an ever-changing market.

ERGONOMIC DESIGN

Mosaic's design has been optimized by using extensive consumer studies and includes the following most sought-after features:

- Ideal shape and size case design provides comfortable one- or two-hand use.
- A large (4.6-inch diagonal) active touch-screen sensory area for easy viewing and selection of keys.
- Four wide and narrow LEDs, distributed on Mosaic's side and top, provide flexible positioning of the remote control and a wide signal transmission range.
- Well-located hard keys for the most often used functions including, *Volume +/-*, *Channel +/-*, *Mute*, and a *Back Light* control.
- Stylus and housing provide an auxiliary method of key selection and convenient stylus storage.
- Contrast control ensures quick adjustment for all lighting conditions.

ABOUT THIS GUIDE

ORGANIZATION

The remaining pages in this user's guide are organized by chapter in a logical order, starting with basic information on *Getting Started* and *Setting Up Mosaic*. After that, advanced topics are covered in *Personalizing Mosaic* and *Mosaic System*. To find detailed information or procedures, use the *Table of Contents* (on page 2) to look up a desired topic.

CONVENTIONS

To help explain procedures and instructions, we use the following conventions:

continued on next page...

MOSAIC

ABOUT THIS GUIDE

CONVENTIONS (CONTINUED)

SOFTWARE MENUS

Mosaic software menus are shown in an *italic* typeface. An example follows:

The *Device Selection Strip* provides device selection.

SOFTWARE/HARDWARE COMMANDS

The instructions require the user to tap a soft key or to press a hard key to perform a certain action. Their labels are **CAPITALIZED**, as shown in the following example:

1. Tap on the **DEVICE SETUP** key.

NOTES

Supplemental information is indicated as a “*NOTE*” and is shown in *italics*, and sometimes it is denoted as “*IMPORTANT*” in ***bold italics*** for emphasis, as follows:

NOTE: If none of the codes work, try using the search method to set up the device (see page 27).

IMPORTANT: Tapping on RESET will completely erase all user-programmed settings, including learned functions, macros, device setup, and downloaded codes.

Chapter 2: Getting Started

OVERVIEW

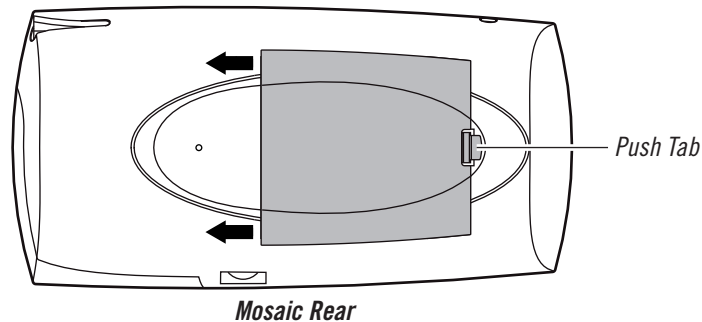
This chapter provides instructions for installing batteries and shows you how to use Mosaic's basic functions. You'll need to complete these sections before moving onto *Chapter 3: Setting Up Mosaic*.

ABOUT BATTERIES

The Mosaic Touch Screen Control Device is powered by four (4) AA alkaline batteries (not included). In the near future, Universal Electronics plans to offer a version that uses rechargeable NiMH batteries with an optional recharging station.

INSTALLING BATTERIES

1. On Mosaic's back side, push the tab and lift off the battery cover.



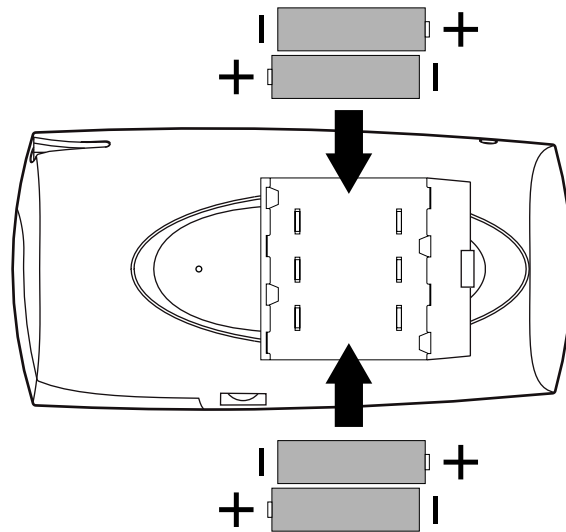
2. Obtain four (4) new AA alkaline batteries. Match the + and - marks on the batteries to the + and - marks in the battery case, then insert the new batteries, as shown on the next page.

continued on next page...

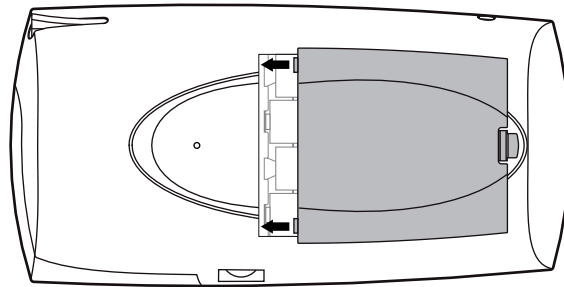
MOSAIC

ABOUT BATTERIES

INSTALLING BATTERIES (CONTINUED)



3. Align the cover's keys with the opening's holes and press the cover back into place. The tab should click when the cover is locked.



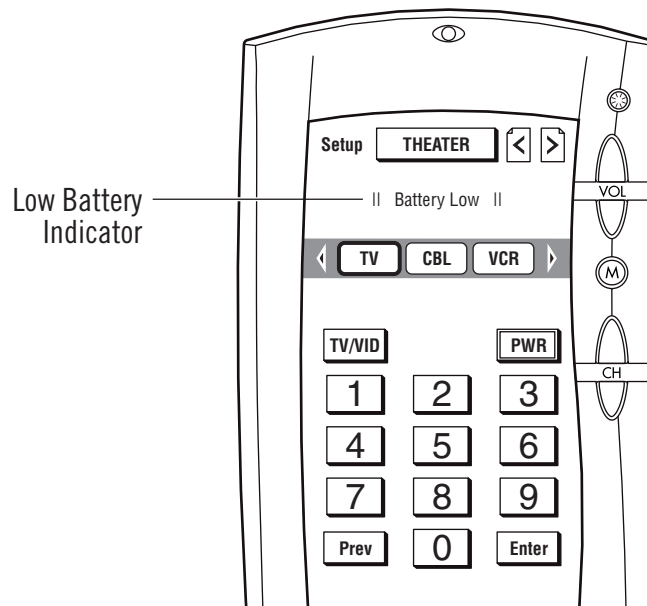
4. If the batteries are inserted correctly, the Mosaic *Welcome* screen will be displayed, followed by the *Device* screen. After 20 seconds of inactivity, the LCD screen will turn off to conserve battery life.

*NOTES: If the screen seems too dark or light, adjust the **Contrast Control** (see page 15).*

USER'S GUIDE

LOW-BATTERY INDICATOR

Whenever batteries need replacement, the *Battery Low* message will stay on in the top portion of the *Device* screen:



At this point, only the control functions will work and all of Mosaic's device set up and personalization parameters will be disabled to prevent accidental loss of any entered commands should the batteries run out.

NOTE: As an additional low-battery warning, Mosaic will emit a beep sound (even if the sound is turned off; see "Chapter 5: Mosaic System-Sound Control" on page 79).

Simply replace the batteries as soon as possible and Mosaic will be restored to its full functionality, complete with your favorite settings.

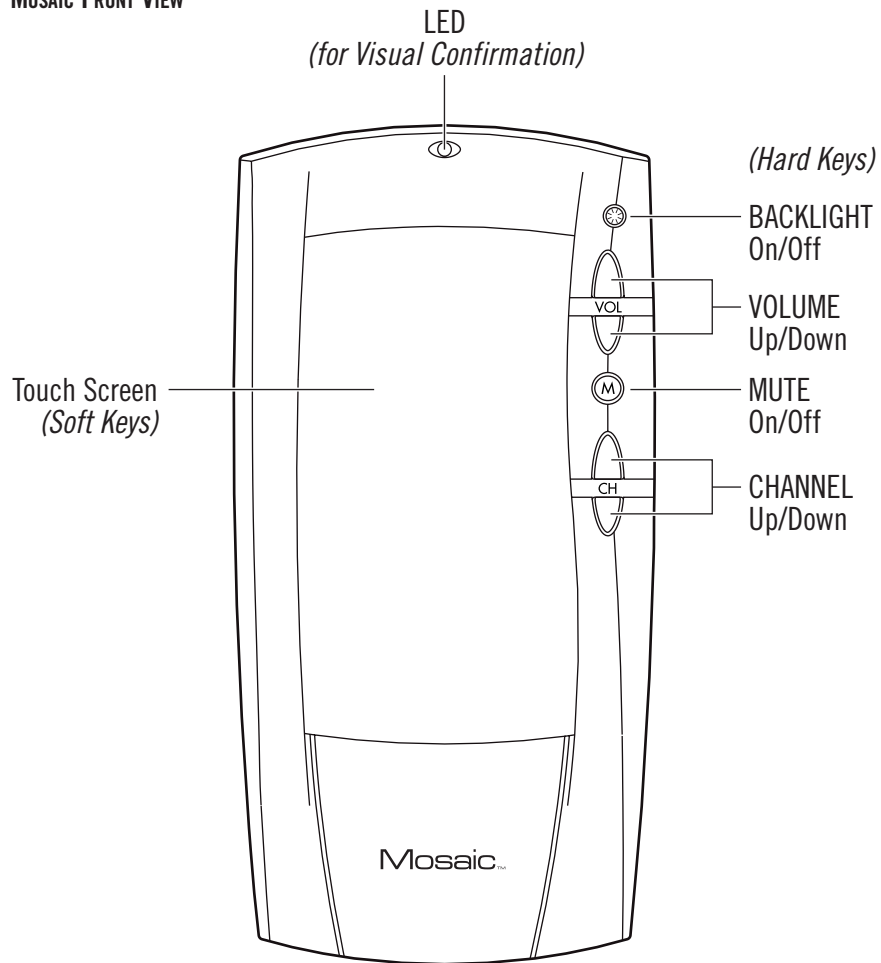
MOSAIC

HOW TO USE MOSAIC

As you study this section, use your Mosaic to get a basic understanding of how it functions. Once you feel comfortable knowing how to use the controls and screens, proceed to the next chapter to set up your new remote control.

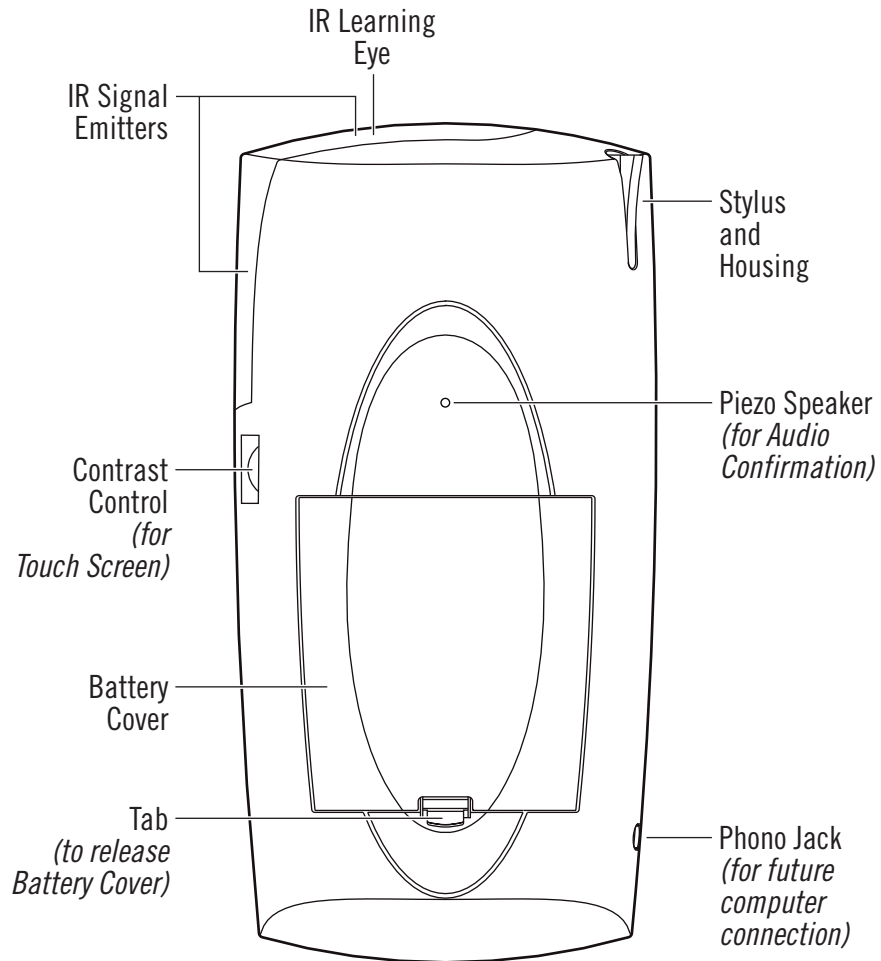
LOCATIONS OF CONTROLS AND CONNECTIONS

MOSAIC FRONT VIEW



USER'S GUIDE

MOSAIC REAR VIEW



MOSAIC

HOW TO USE MOSAIC (continued)

USING THE HARD KEYS

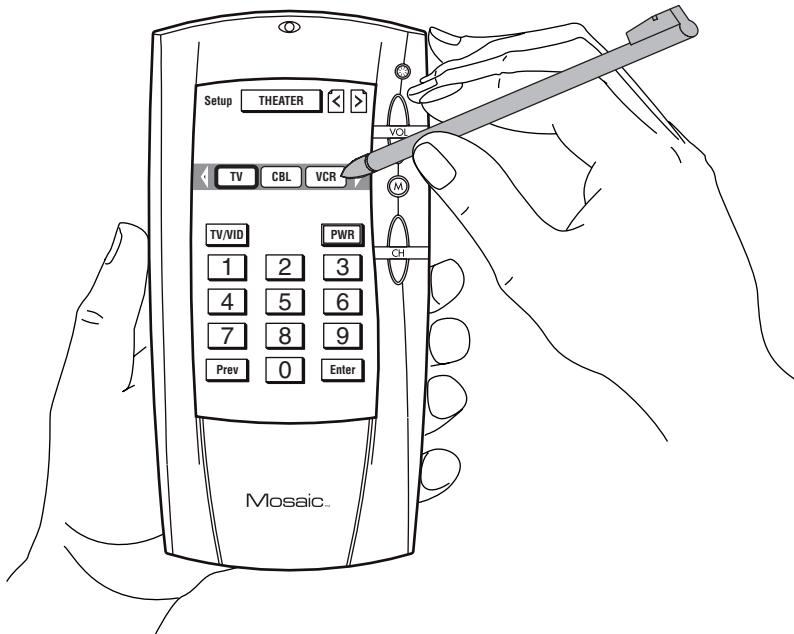
The most-often used remote control functions are assigned to hard keys (located along Mosaic's right edge – see the illustration on page 14). After selecting a device on the *Device Selection Strip* (see next page), use the hard keys as follows:

- Press **VOL+** (or **VOL-**) to raise (or lower) the volume level of the selected device.
- Press **M** to mute the volume of the selected device. Press it again to restore volume.
- Press **CH+** (or **CH-**) for the next higher (or lower) channel of the selected device.
- Press the **Backlight** key to turn on the LCD backlight for enhanced viewing in a dark room. The backlight will come on each time you use the touch screen and stay on for 15 seconds after last inactivity. Press it again to turn it off.

NOTE: Using the backlight will drain the batteries at a faster rate.

USING THE TOUCH SCREEN

Mosaic features a *Touch Screen* that responds to touch commands, whether you use the supplied *Stylus* or your finger tip. Each time you tap on the screen, you'll see the LED blink and hear a beep tone, which serve as visual and audio confirmation of your command.

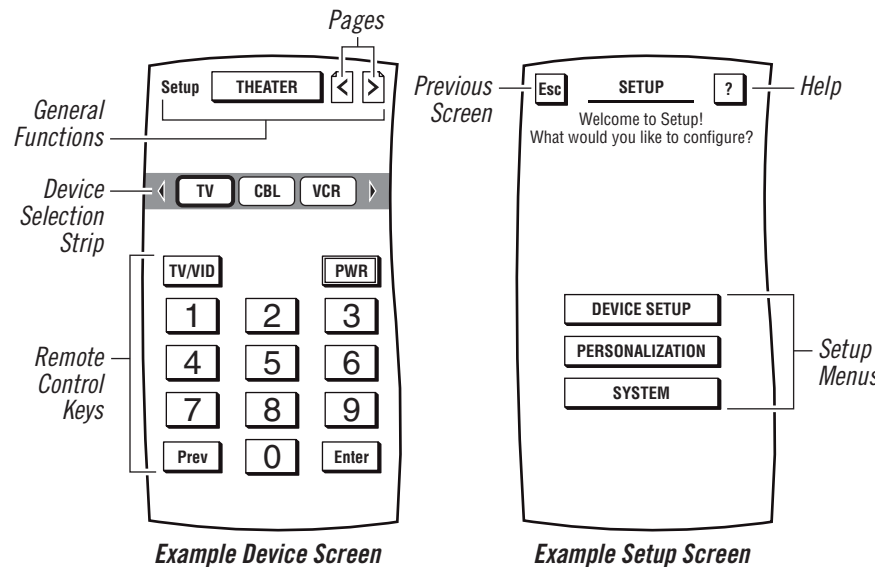


USER'S GUIDE

On the following four pages, you'll learn how the *Touch Screen* is organized and how to select a device and control its functions.

TOUCH SCREEN ORGANIZATION

The *Touch Screen* uses two types of screen formats – (remote control) *Device Screens* and (programming) *Setup Screens*, as shown in an example below.



On a *Device Screen*, the screen is divided into three main parts:

- The upper portion contains general functions like *Setup*, *Home Theater*, and *Page Arrows (Navigation)*. These topics will be covered in later chapters (see *Table of Contents* on page 2).
- The *Device Selection Strip* provides device selection. Three devices are shown at a time from a recirculating list of up to 15 devices by using the left/right scroll arrows. When a device is selected, the device key becomes highlighted and its remote control keys are dynamically generated according to the parameters implemented by the manufacturer's remote control code.
- The lower portion contains the device's universal remote control keys and is accessed on one or more pages by using the *Page* arrows.

On a *Setup Screen*, the screen lists programs in a menu format that allows you to set up devices, personalize Mosaic with favorite settings, or set up Mosaic's system.

continued on next page...

MOSAIC

HOW TO USE MOSAIC

USING THE TOUCH SCREEN (CONTINUED)

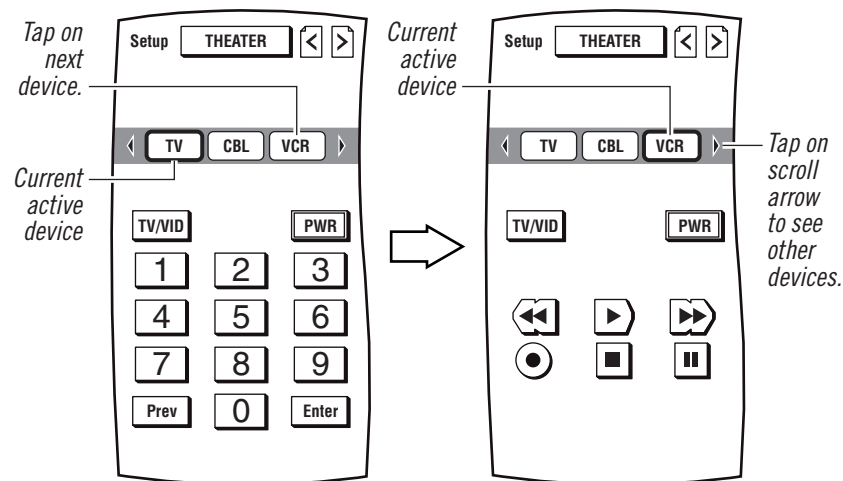
SELECTING A DEVICE

1. Tap on the *Touch Screen* once, anywhere on the screen, to activate the display. If needed, adjust the **Contrast Control** (see page 15) for best viewing.

NOTE: When Mosaic is not in use, the LCD screen will turn off after a preset time to conserve battery life. When activated, Mosaic remembers and displays the last-used screen or menu.

2. Point Mosaic at the device you want to control.
3. Using the *Device Selection Strip*, tap on the desired device key (e.g., **VCR**). If needed, tap on the left/right scroll arrows to display other recirculating device choices. The selected device will become highlighted, as shown in the example below.

NOTE: As a default factory setting, the Device Selection Strip will show only three devices. To add up to 12 more devices, see "Chapter 3: Setting Up Mosaic" starting on page 21.

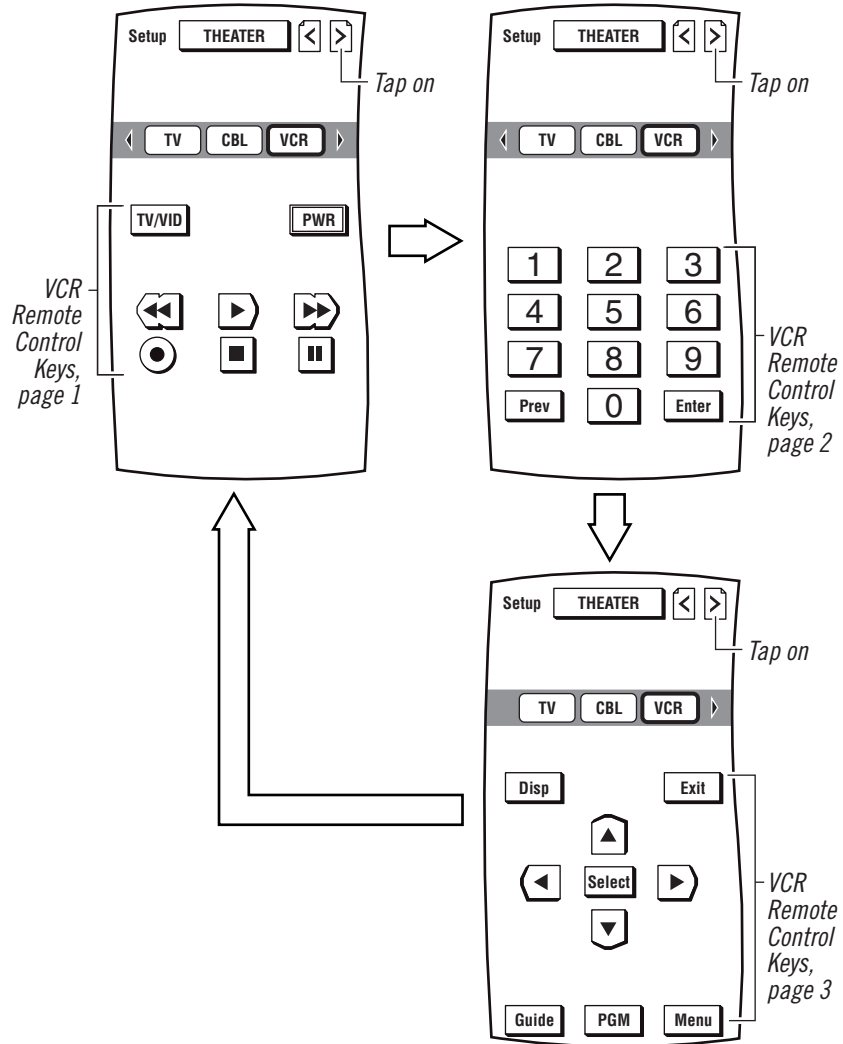


USER'S GUIDE

CONTROLLING A SELECTED DEVICE

1. Tap on the **Page Arrow** keys one or more times to view the selected device's remote control keys on different pages, as shown in the example below.

NOTE: The pages are designed to recirculate, so there is no beginning or ending page.



2. Tap on the appropriate remote control keys to control a desired function.

NOTE: The selected device may not respond unless it has been already setup. To setup your entertainment devices, see the instructions in the next chapter.

MOSAIC

HOW TO USE MOSAIC

USING THE TOUCH SCREEN (CONTINUED)

USING ADVANCED CONTROLS

Mosaic provides a number of advanced controls like *Macros*, *Learning*, *Key Mover*, *Key Magic*, and *Home Theater* mode. Instructions on how to use these features will be discussed in *Chapter 4: Personalizing Mosaic*, starting on page 39.

TAKING CARE OF MOSAIC'S TOUCH SCREEN

- Use only the supplied *Stylus* or your finger tip to gently tap on the soft keys. Do not use force and do not use a pen or any sharp object – this can damage the surface.
- Always keep the touch screen dry. Do not spill any liquids on the remote control. Be sure to wipe off any spills immediately.
- Do not expose Mosaic to extreme temperatures. Keep it away from all heat sources and direct sunlight.
- Do not drop Mosaic or drop anything on the touch screen – it is made of glass.
- Only use a clean, soft cloth to wipe fingerprints and dust off the touch screen. If needed, dampen the cloth slightly with water before cleaning. Do not use any other cleaning solutions.

USING THE SETUP HELP SCREENS

To help you with *Device Setup*, *Personalization*, and *System* functions, Mosaic provides dynamic *Help Screens* that include setup and operational instructions, minimizing the need for you to continually reference the instruction manual. As you navigate through the menus in *Setup* and a question comes up, simply tap on the **?** key to view a brief explanation of the selected menu item. If desired, use the scroll bars to view related topics. At any time, tap on the **ESC** key to return to the previous *Setup* menu screen.

Chapter 3: Setting Up Mosaic

OVERVIEW

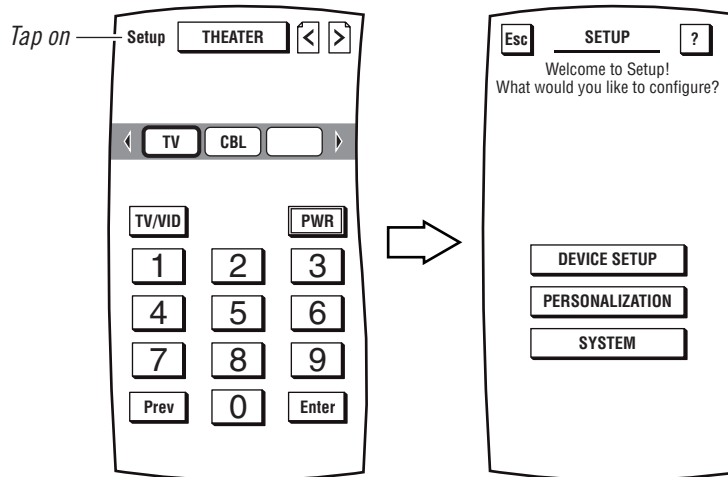
This chapter shows you how to set up Mosaic to control your entertainment devices. Here you'll learn several methods to add devices including setup by brand, search, or device. You'll also learn how to delete devices you no longer need and to add new codes that have been downloaded.

NOTE: If current settings are locked, Mosaic will prompt you to unlock them first, before you access the "SETUP Menu" (see "Chapter 5: Mosaic System – Lock Settings" on page 80).

SETUP BY BRAND

The easiest way to add devices to Mosaic is to perform a setup by manufacturer brand. With this method you select a device to add, select the brand you own, and Mosaic automatically finds the correct manufacturer's code to correctly control the device.

1. On the *Device Screen* in the upper left corner, tap on **Setup**. You will see the main *SETUP Menu* that greets you and asks, "What would you like to configure?"



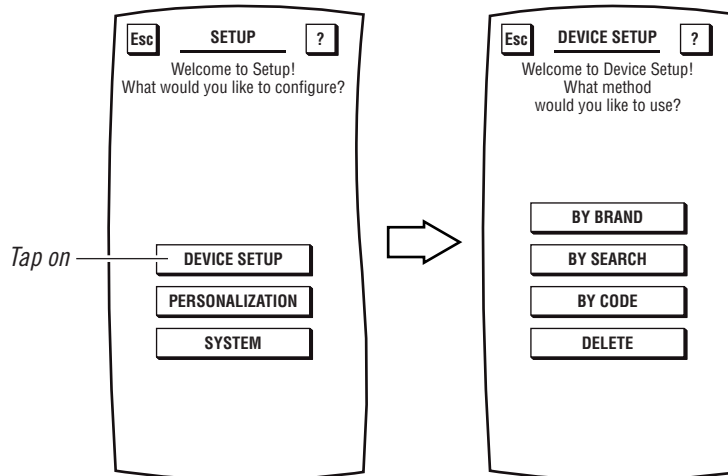
continued on next page...

MOSAIC

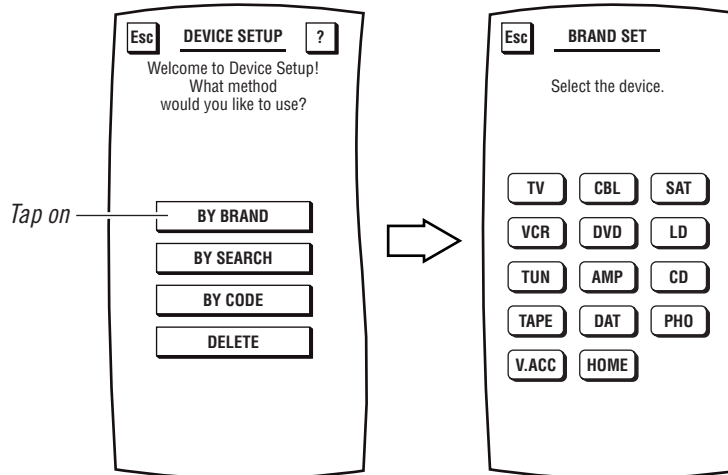
SETUP BY BRAND (continued)

2. Tap on the **DEVICE SETUP** key. You will see the *DEVICE SETUP Menu*.

*NOTE: To return to a previous menu, tap on the **ESC** key. To return to last-displayed Device Screen, press down on **ESC** or **MUTE** for at least 2 seconds. For Setup help, tap the **?** key.*



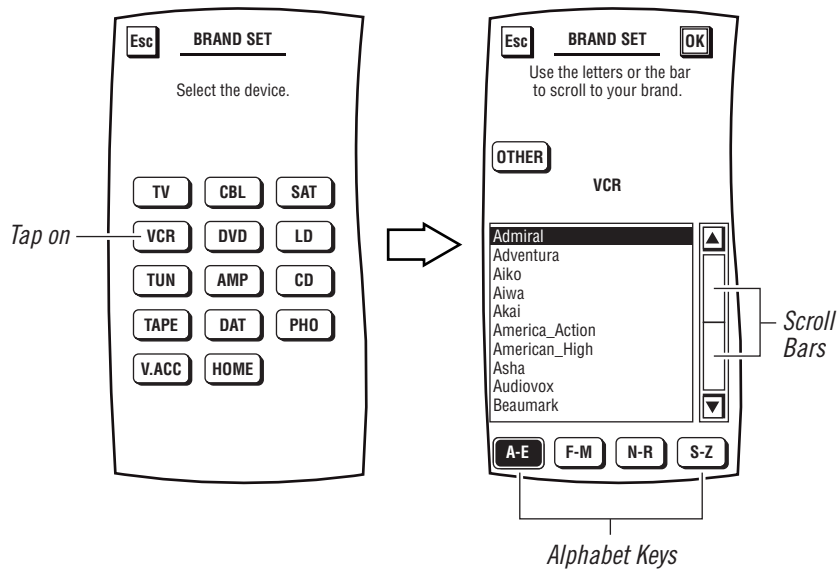
3. Tap on the **BY BRAND** key. You will see the *BRAND SET Menu*.



USER'S GUIDE

4. Tap on the device key for the device you want to add (e.g., **VCR**). You will see the *BRAND SET Menu* (e.g., **VCR**) that alphabetically lists all available brands.

*NOTE: Make sure the device you want to add is turned off (i.e., **POWER** switch is OFF).*



5. Tap on an alphabet key (e.g., **F-M**) to jump to a group that includes your brand (e.g., **GE**). If needed, use the menu scroll bars to narrow your search.

*NOTE: If your brand is not listed, tap on the **OTHER** key to perform a search (see "Setup By Search" on page 27).*

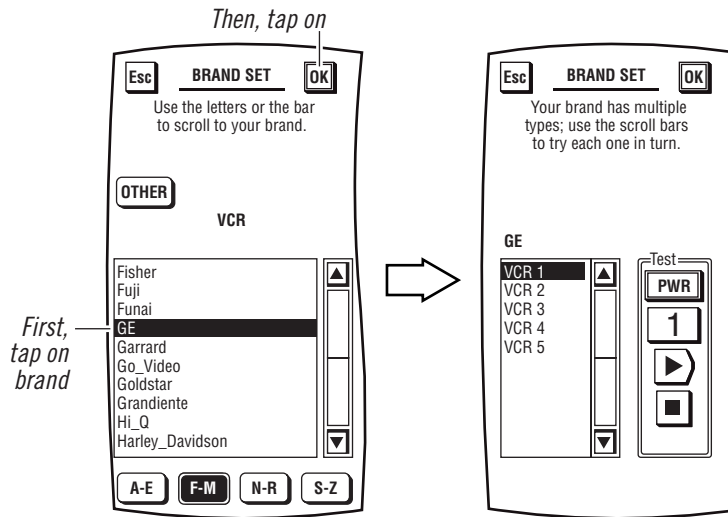
6. Tap on a desired brand; it will become highlighted. Tap on the **OK** key. You will see the *BRAND SET Menu* (as shown on the next page) which provides one or more code tests for the desired device.

*NOTE: You will see a list in ascending numerical order if your device has multiple codes. Start with the highlighted listing (e.g., **VCRT**), since it is designated as the most popular one.*

continued on next page...

MOSAIC

SETUP BY BRAND (continued)

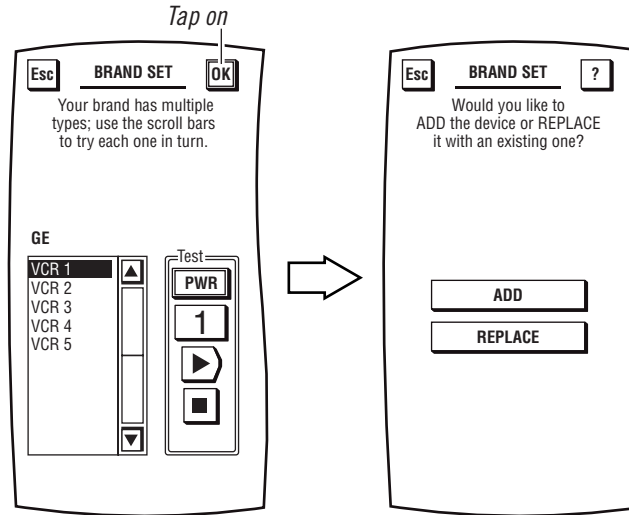


7. Aim Mosaic at the desired device (e.g., VCR) and tap on the **PWR** key. The device should turn on. If it does not respond, tap on the next device in the list (e.g., **VCR 2**), select it and then tap on the **PWR** key again. If the device still does not respond, repeat this process for each device listed (e.g., **VCR 3**, **VCR 4**, etc.) until you find a code that works.

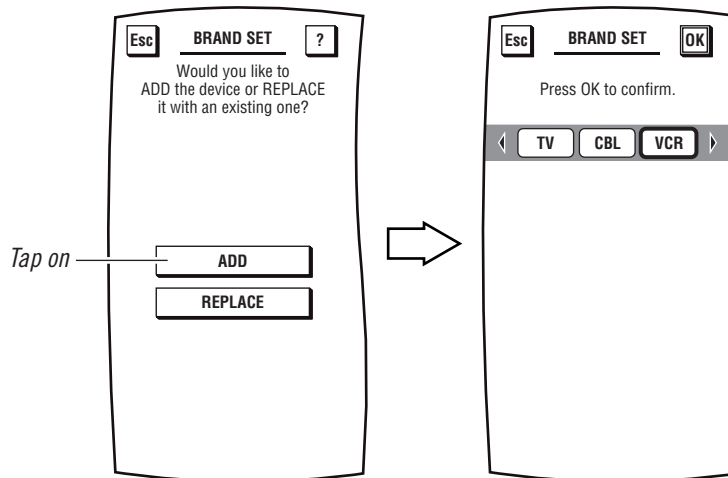
NOTE: If none of the codes work, try using the search method to set up the device (see page 27).

8. To save a code that works, tap on the **OK** key. You will see the **BRAND SET ADD/REPLACE** menu (as shown on the next page) that lists two choices.
 - Use the **ADD** key when setting up a new device (e.g., a DVD player) that is not currently on the *Device Selection Strip* (if needed, refer to *Using the Touch Screen – Selecting a Device* on page 18). The remaining instructions assume you will be adding a new device.
 - Use the **REPLACE** key to replace a device (e.g., a new TV set) that is currently on the *Device Selection Strip*.

USER'S GUIDE



9. Tap on the **ADD** key to add the device to Mosaic's memory. You will see the default device label being added to the *Device Selection Strip*.



*NOTE: If you tap on the **REPLACE** key instead, Mosaic will ask you to select the device to be replaced and, after your selection, if you want to relabel it. However, if the device to be replaced has programmed keys, Mosaic will first ask if you want to keep or clear the settings.*

continued on next page...

MOSAIC

SETUP BY BRAND (continued)

10. Tap on the **OK** key to confirm your choice. Mosaic will ask if you want to relabel the newly-added device.
 - To relabel it, tap on the **YES** key and you will see the *LABEL* Menu. Follow the procedure that is similar to the one starting with step 3 on page 54 to relabel the key and tap the **OK** key when you're done.
 - To keep the label the same, tap on the **NO** key.
11. You will see a confirmation screen that says the key has been successfully programmed. To program a function of the same type, tap on the **ESC** key. To return to the *Device Screen*, press on **ESC** or **MUTE** for at least 2 seconds.
12. To test remote control of the newly-added device, tap on its key on the *Device Selection Strip*. Try using the Hard Keys to adjust volume and change channels. Try tapping on the *Page Arrows* to access other remote control functions and then try tapping on the soft keys on each page to test them.

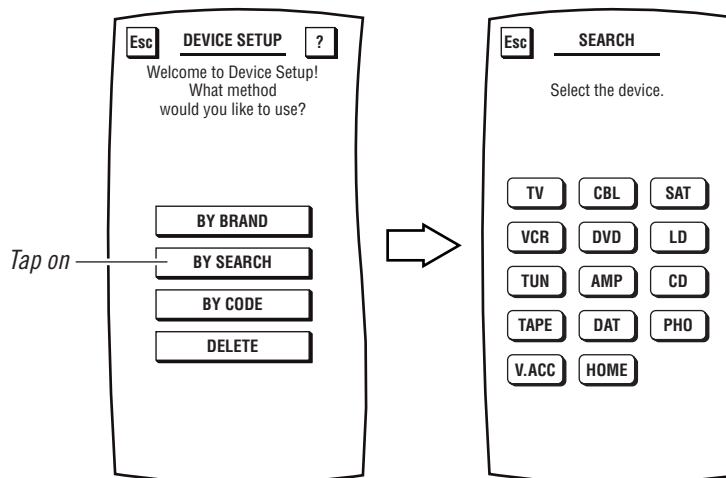
SETUP BY SEARCH

As an alternative method, you can use Mosaic's search program to find the correct manufacturer's codes to set up your entertainment devices. With this method you first select a device you want to add, then you perform a code test, advancing through one or more types, to find the one that works.

1. On the *Device Screen* in the upper left corner, tap on **Setup**. You will see the main *SETUP Menu* that greets you and asks, "What would you like to configure?"
2. Tap on the **DEVICE SETUP** key. You will see the *DEVICE SETUP Menu*.

*NOTE: To return to a previous menu, tap on the **ESC** key. To return to last-displayed Device Screen, press down on **ESC** or **MUTE** for at least 2 seconds. For Setup help, tap the **?** key.*

3. Tap on the **BY SEARCH** key. You will see the *SEARCH Menu*.



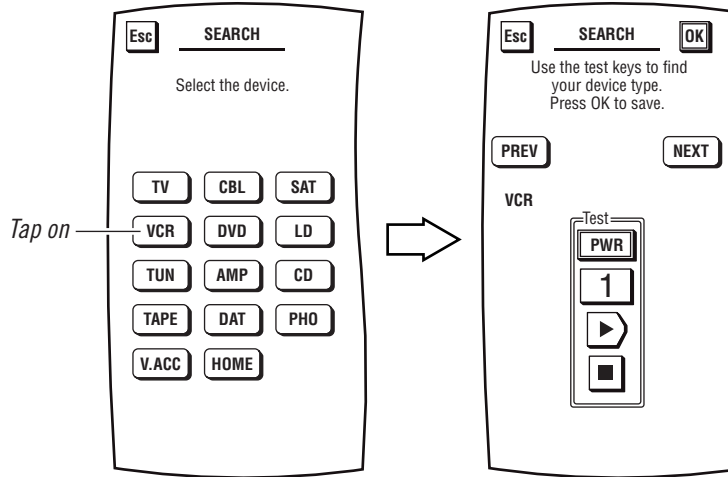
4. Tap on the device key for the device you want to add (e.g., **VCR**). You will see the *SEARCH Test Menu* (as shown on the next page) that you will use to find a working code.

*NOTE: Make sure the device you want to add is turned off (i.e., **POWER** switch is OFF).*

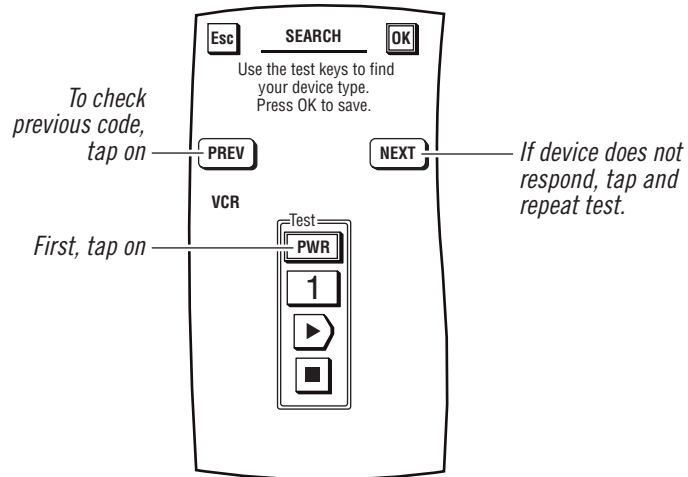
continued on next page...

MOSAIC

SETUP BY SEARCH (continued)

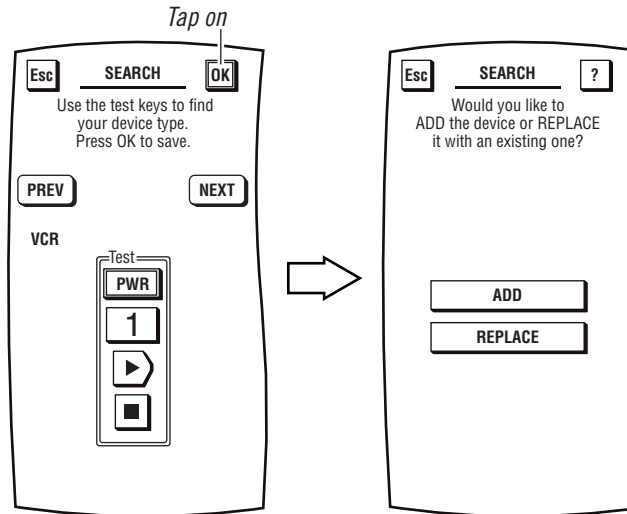


5. Aim Mosaic at the desired device (e.g., VCR) and tap on the **PWR** key. The device should turn on. If it does not respond, advance the code test by tapping on the **NEXT** key and then tap on the **PWR** key again. If the device still does not respond, repeat this process, advancing through code tests until you find a code that works.



USER'S GUIDE

6. To save a code that works, tap on the **OK** key. You will see the *SEARCH ADD/REPLACE menu* that lists two choices.



- Use the **ADD** key when setting up a new device (e.g., a DVD player) that is not currently on the *Device Selection Strip* (if needed, refer to *Using the Touch Screen – Selecting a Device* on page 18). The remaining instructions assume you will be adding a new device.
 - Use the **REPLACE** key to replace a device (e.g., a new TV set) that is currently on the *Device Selection Strip*.
7. Tap on the **ADD** key to add the device to Mosaic's memory. You will see the default device label being added to the *Device Selection Strip*.
- NOTE: If you tap on the REPLACE key instead, Mosaic will ask you to select the device to be replaced and, after your selection, if you want to relabel it. However, if the device to be replaced has programmed keys, Mosaic will first ask if you want to keep or clear the settings.*
8. Tap on the **OK** key to confirm your choice. Mosaic will ask if you want to relabel the newly-added device.
- To relabel it, tap on the **YES** key and you will see the *LABEL Menu*. Follow the procedure that is similar to the one starting with step 3 on page 54 to relabel the key and tap the **OK** key when you're done.
 - To keep the label the same, tap on the **NO** key.

continued on next page...

MOSAIC

SETUP BY SEARCH (continued)

9. You will see a confirmation screen that says the key has been successfully programmed. To program a function of the same type, tap on the **ESC** key. To return to the *Device Screen*, press on **ESC** or **MUTE** for at least 2 seconds.
10. To test remote control of the newly-added device, tap on its key on the *Device Selection Strip*. Try using the Hard Keys to adjust volume and change channels. Try tapping on the *Page Arrows* to access other remote control functions and then try tapping on the soft keys on each page to test them.

SETUP BY CODE

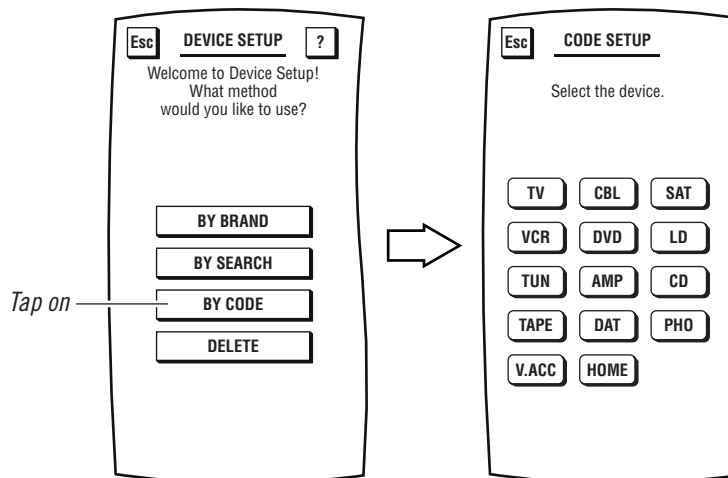
Mosaic is a technologically-advanced control device that is designed to be set up using the *Set Up By Brand* feature described on page 21. This section is reserved for installers and programmers of the Mosaic Touch Screen Control Device who are familiar with setting up devices using manufacturer's 4-digit IR codes.

NOTE: Manufacturer's codes are available for customer access on our web site – see "About Mosaic" on page 82 for details on locating the URL address.

1. On the *Device Screen* in the upper left corner, tap on **Setup**. You will see the main *SETUP Menu* that greets you and asks, "What would you like to configure?"
2. Tap on the **DEVICE SETUP** key. You will see the *DEVICE SETUP Menu*.

*NOTE: To return to a previous menu, tap on the **ESC** key. To return to last-displayed Device Screen, press down on **ESC** or **MUTE** for at least 2 seconds. For Setup help, tap the **?** key.*

3. Tap on the **BY CODE** key. You will see the *CODE SETUP Menu*.



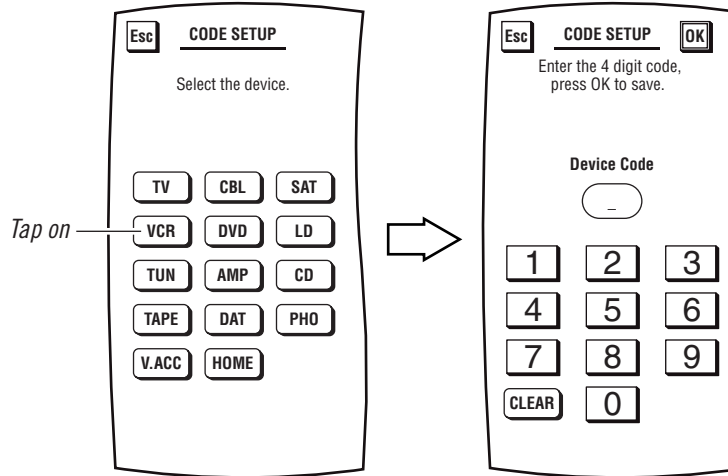
4. Tap on the device key for the device you want to add (e.g., **VCR**). You will see the *DEVICE CODE Menu* (as shown on the next page) that you will use to enter a working code.

*NOTE: Make sure the device you want to add is turned off (i.e., **POWER** switch is OFF).*

continued on next page...

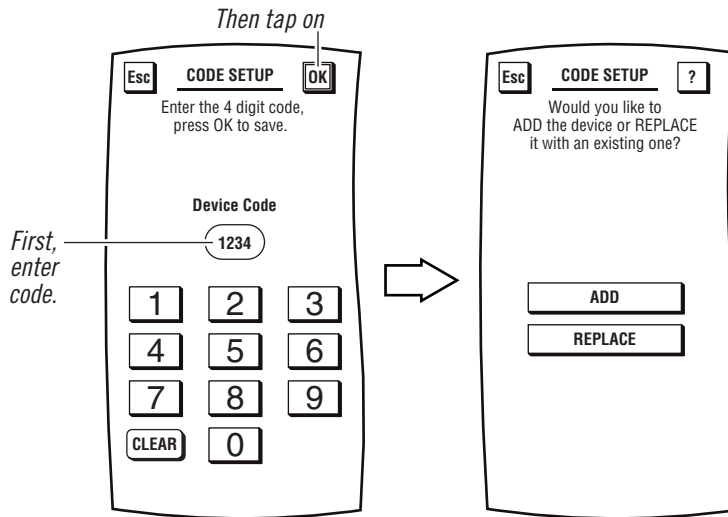
MOSAIC

SETUP BY CODE (continued)



- Using the keypad, tap in a four-digit code and then tap the **OK** key. If the code is valid, you will see the *CODE SETUP ADD/REPLACE menu* that lists two choices.

*NOTE: If the code is not valid, Mosaic will reject it and prompt you to try again. If you make a mistake entering the code, tap the **CLEAR** key to erase it.*



USER'S GUIDE

- Use the **ADD** key when setting up a new device (e.g., a DVD player) that is not currently on the *Device Selection Strip* (if needed, refer to *Using the Touch Screen – Selecting a Device* on page 18). The remaining instructions assume you will be adding a new device.
 - Use the **REPLACE** key to replace a device (e.g., a new TV set) that is currently on the *Device Selection Strip*.
6. Tap on the **ADD** key to add the device to Mosaic's memory. You will see the default device label being added to the *Device Selection Strip*.

*NOTE: If you tap on the **REPLACE** key instead, Mosaic will ask you to select the device to be replaced and, after your selection, if you want to relabel it. However, if the device to be replaced has programmed keys, Mosaic will first ask if you want to keep or clear the settings.*

7. Tap on the **OK** key to confirm your choice. Mosaic will ask if you want to relabel the newly-added device.
- To relabel it, tap on the **YES** key and you will see the *LABEL* Menu. Follow the procedure that is similar to the one starting with step 3 on page 54 to relabel the key and tap the **OK** key when you're done.
 - To keep the label the same, tap on the **NO** key.
8. You will see a confirmation screen that says the key has been successfully programmed. To program a function of the same type, tap on the **ESC** key. To return to the *Device Screen*, press on **ESC** or **MUTE** for at least 2 seconds.
9. To test remote control of the newly-added device, tap on its key on the *Device Selection Strip*. Try using the Hard Keys to adjust volume and change channels. Try tapping on the *Page Arrows* to access other remote control functions and then try tapping on the soft keys on each page to test them.

MOSAIC

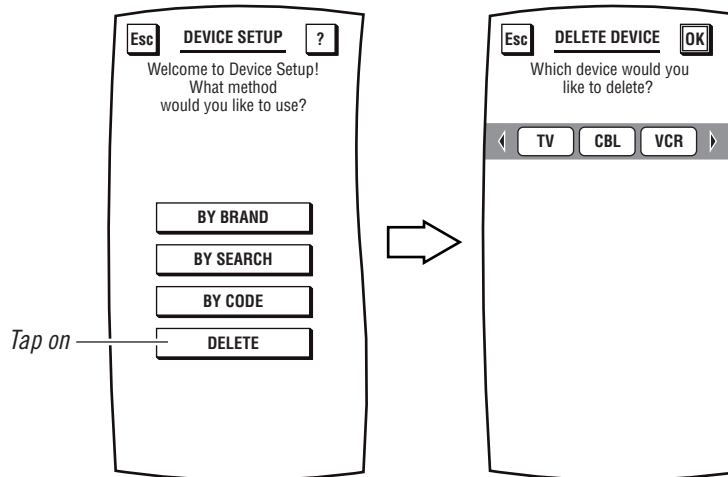
DELETING A DEVICE

If you no longer use a certain device or it has been incorrectly added to the *Device Selection Strip*, use the following procedure to delete it from Mosaic's memory.

1. On the *Device Screen* in the upper left corner, tap **Setup**. You will see the main *SETUP Menu* that greets you and asks, "What would you like to configure?"
2. Tap on the **DEVICE SETUP** key. You will see the *DEVICE SETUP Menu*.

*NOTE: To return to a previous menu, tap on the **ESC** key. To return to last-displayed Device Screen, press and hold down **ESC** for at least 2 seconds. For Setup help, tap the **?** key.*

3. Tap on the **DELETE** key. You will see the *DELETE DEVICE Menu* which shows the current *Device Selection Strip*.



4. Using the *Device Selection Strip*, tap the device key you want to delete. If needed, tap the left/right scroll arrows to display other device choices. When you have selected a device, it will become highlighted as **YES** and **NO** keys appear.
 - To delete the selected device, tap on the **YES** key. You will see a confirmation screen that says the key has been successfully deleted. To delete another device, tap on the **ESC** key to return to the *DELETE DEVICE Menu*, or press down on **ESC** or **MUTE** for at least 2 seconds to return to the last-displayed *Device Screen*.
 - To cancel deleting the selected device, tap on the **NO** key. Mosaic will return to the *Device Selection Strip* with no devices selected to start the process over. If you're done, tap on the **ESC** to return to the *DEVICE SETUP Menu*, or press down on **ESC** or **MUTE** for at least 2 seconds to return to the last-displayed *Device Screen*.

ADDING NEW CODES

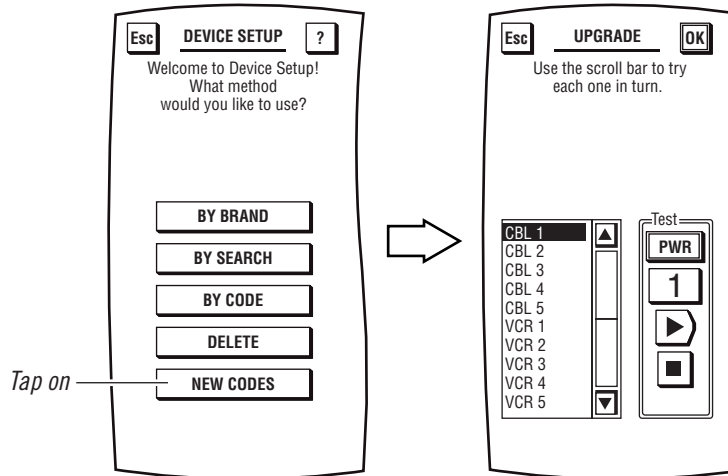
NOTE: This section only applies after you have performed a download of new device codes (see "Chapter 5: Mosaic System – Upgrading Codes" on page 73).

After downloading, Mosaic will store the new device codes in memory. An additional soft key, labeled **NEW CODES**, will appear on the *DEVICE SETUP Menu* which you will use to find a working code for a selected device.

1. On the *Device Screen* in the upper left corner, tap on **Setup**. You will see the main *SETUP Menu* that greets you and asks, "What would you like to configure?"
2. Tap on the **DEVICE SETUP** key. You will see the *DEVICE SETUP Menu*.

*NOTE: To return to a previous menu, tap on the **ESC** key. To return to last-displayed Device Screen, press down on **ESC** or **MUTE** for at least 2 seconds. For Setup help, tap the **?** key.*

3. Tap on the **NEW CODES** key. You will see the *UPGRADE Test Menu*.



*NOTE: Make sure the device you want to add is turned off (i.e., **POWER** switch is OFF).*

continued on next page...

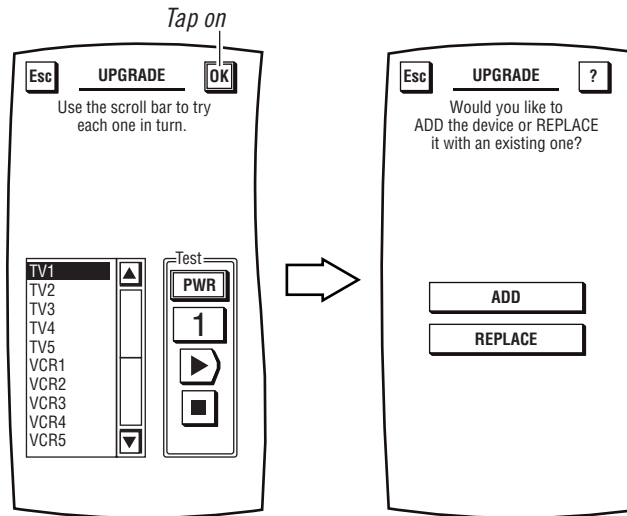
MOSAIC

ADDING NEW CODES (continued)

- Tap on the first code in the list (e.g., **TV 1**), aim Mosaic at the desired device (e.g., television), and tap on the **PWR** key. The device should turn on. If it does not respond, tap on the next code in the list (e.g., **TV 2**), then tap on the **PWR** key again. If the device still does not respond, repeat this process by testing each code until you find one that works.

NOTE: Depending on your download, the code list may include more than one device type.

- To save a code that works, tap on the **OK** key. You will see the **UPGRADE ADD/REPLACE** menu that lists two choices.



- Use the **ADD** key when setting up a new device (e.g., a DVD player) that is not currently on the *Device Selection Strip* (if needed, refer to *Using the Touch Screen – Selecting a Device* on page 18). The remaining instructions assume you will be adding a new device.
 - Use the **REPLACE** key is used when replacing a device (e.g., a new TV set) that is currently on the *Device Selection Strip*.
- Tap on the **ADD** key to add the device to Mosaic's memory. You will see the default device label being added to the *Device Selection Strip*.

*NOTE: If you tap on the **REPLACE** key instead, Mosaic will ask you to select the device to be replaced and, after your selection, if you want to relabel it. However, if the device to be replaced has programmed keys, Mosaic will first ask if you want to keep or clear the settings.*

USER'S GUIDE

7. Tap on the **OK** key to confirm your choice. Mosaic will ask if you want to relabel the newly-added device.
 - To relabel it, tap on the **YES** key and you will see the *LABEL* Menu. Follow the procedure that is similar to the one starting with step 3 on page 54 to relabel the key and tap the **OK** key when you're done.
 - To keep the label the same, tap on the **NO** key.
8. You will see a confirmation screen that says the key has been successfully programmed. To program a function of the same type, tap on the **ESC** key. To return to the *Device Screen*, press on **ESC** or **MUTE** for at least 2 seconds.
9. To test remote control of the newly-added device, tap on its key on the *Device Selection Strip*. Try using the Hard Keys to adjust volume and change channels. Try tapping on the *Page Arrows* to access other remote control functions and then try tapping on the soft keys on each page to test them.
10. If desired, repeat all steps to add other devices that appeared in the new codes list of step 3.

MOSAIC

ABOUT LOCKING SETTINGS

After you have set up all the devices for Mosaic to control, we highly recommend locking the settings to keep them from being inadvertently erased or changed. Please refer to *Chapter 5: Mosaic System – Lock Settings* on page 80 for further instructions.

Chapter 4: Personalizing Mosaic

OVERVIEW

This chapter shows you how to set up Mosaic's advanced features like *Macros*, *Key Mover*, *Learning*, *Key Magic*, *Labeling*, *Volume Lock*, *View/Delete*, and *Home Theater*. You will access them after tapping on **PERSONALIZATION** in the *Setup* menu.

USING MACROS

Mosaic includes a powerful *Macro* feature that memorizes and plays back a series of key strokes at any time with the tap of one key. Up to 21 macros can be defined, each containing a maximum of 32 keystrokes. Once defined, a macro must be placed on a *Device Screen* to be used. Mosaic allows placement of up to four "global" macro keys across the top of every *Device Screen*. Also, you may place additional macros in specific *Device Screens* using empty locations or by overriding existing key functions.

ADDING A MACRO

As an instruction aid, we'll create an example "Power On" macro that turns on the Cable Box and TV power and then tunes in a favorite channel in this exact order:

1. Select the Cable Box and power it on.
2. Add a 2-second delay.
3. On the Cable Box, select channel 28.
4. Select the TV and power it on.
6. Add a 1-second delay.
7. On the TV, select channel 3 to view the modulated signal from the Cable Box.

Each command counts as one macro keystroke, except when selecting a device key which counts as two. In this example, the total keystroke count is eleven.

NOTE: Adding delays allow devices to power up to their full operating state. In most cases, 1 to 2 seconds is sufficient, but Mosaic will accept up to 8 seconds and only count it as one keystroke.

continued on next page...

MOSAIC

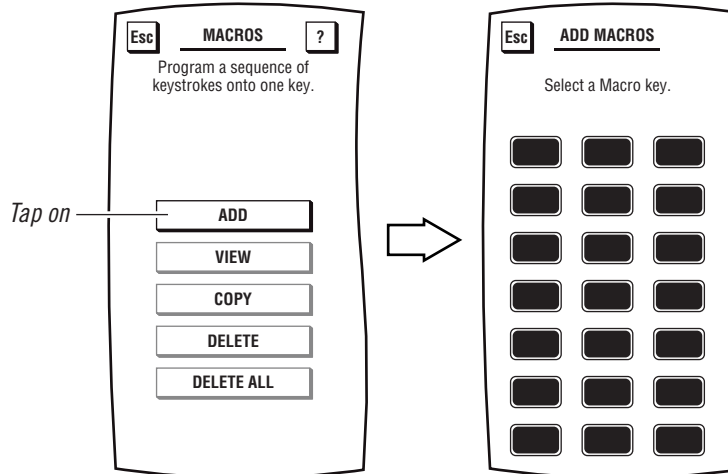
USING MACROS

ADDING A MACRO (CONTINUED)

1. On the *Device Screen* in the upper left corner, tap on **Setup**. You will see the main *SETUP Menu* that greets you and asks, “What would you like to configure?”
2. Tap on the **PERSONALIZATION** key. You will see the *PERSONALIZATION Menu*.

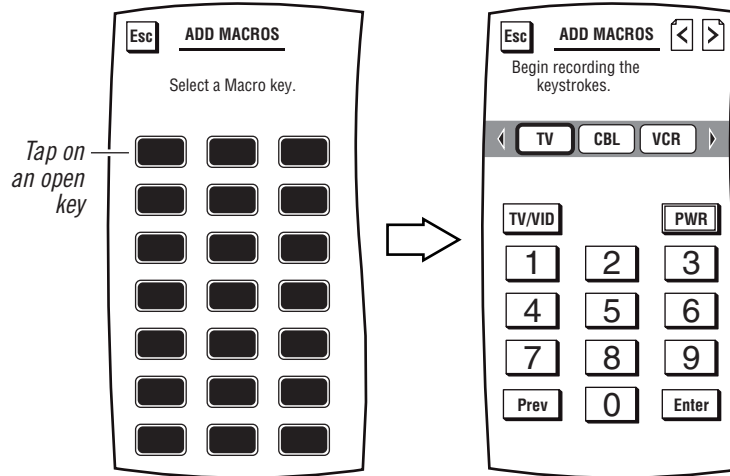
*NOTE: To return to a previous menu, tap on the **ESC** key. To return to last-displayed Device Screen, press down on **ESC** or **MUTE** for at least 2 seconds. For Macro help, tap the **?** key.*

3. Tap on the **MACROS** key. You will see the *MACROS Menu*.
4. Tap on the **ADD** key. You will see the *ADD MACROS Menu*.



5. Tap on an open **Macro** key (i.e., a macro key that is not labeled). You will see the *ADD MACROS Screen* (on shown on the next page) which looks similar to a Device Screen.

continued on next page...

USER'S GUIDE


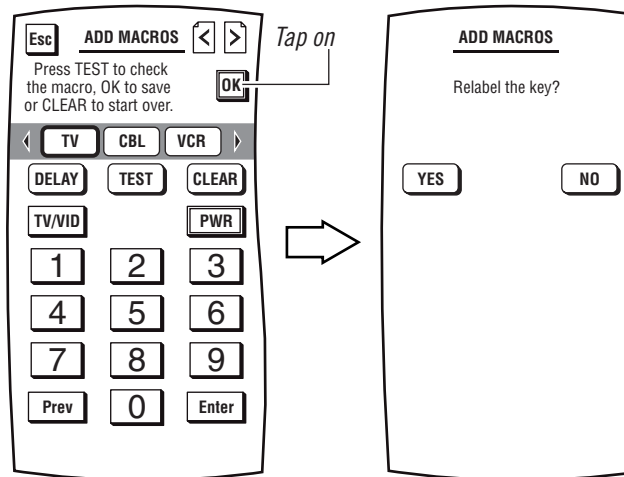
6. At this point, we'll record the example keystrokes listed on page 39. But first make sure the Cable Box and TV are turned off.
 - a. Tap on the **CBL** key on the *Device Selection Strip*.
 - b. Tap on the **PWR** key.
 - c. Tap on the **DELAY** key twice for 2-second delay.
NOTE: Each DELAY keystroke is equal to 1 second.
 - d. Tap on the **2** key followed by the **8** key to enter channel 28.
 - e. Tap on the **TV** key on the *Device Selection Strip*.
 - f. Tap on the **PWR** key.
 - g. Tap on the **DELAY** key once for 1-second delay.
 - h. Tap on the **0** key followed by the **3** key to enter channel 3.
 - i. Aim Mosaic at the Cable Box/TV and tap on the **TEST** key. You should see the LED blink as commands are sent to power on the Cable Box and tune it to channel 28, followed by TV power on and tuning it to channel 3. If the macro did not work correctly, tap on the **CLEAR** key and repeat steps 6a through 6i.
7. To save the macro, tap on the **OK** key. You will see the *ADD MACROS Screen* (as shown on the next page).

continued on next page

MOSAIC

USING MACROS

ADDING A MACRO (CONTINUED)



8. To label the saved macro, tap on the **YES** key. You will see the *ADD MACROS Label Screen*. Follow the procedure that is similar to the one starting with step 3 on page 54 to label the macro as **TV On** and tap the **OK** key when you're done.

*NOTE: If you tap on the **NO** key, the macro will be labeled using the default labeling system which labels macros in ascending numerical order (e.g., **M1**, **M2**, **M3**, etc.).*

9. Mosaic will ask you where you want to copy the macro.
- To have it appear on all *Device Screens*, tap on the **ALL DEVICES** key. You will see a row of up to four empty keys appear which correspond to the space directly below *Device Selection Strip*. Tap on any empty key to assign it or tap on an existing one to override it. Mosaic will display a confirmation screen.
 - To have it appear on a specific *Device Screen*, tap on the **SPECIFIC DEVICE** key. You will see the last-displayed *Device Screen*. Using the *Device Selection Strip*, tap on the desired device key. If needed, tap on left/right scroll arrows to view other device choices. The *Device Screen* will display all keys on all pages for the selected device. Tap on any empty key. Mosaic will display a confirmation screen.

*NOTE: To return to a previous menu, tap on the **ESC** key. To return to last-displayed *Device Screen*, press down on **ESC** or **MUTE** for at least 2 seconds. For Macro help, tap the **?** key.*

10. Repeat steps 1 through 9 for each new macro you want to create.

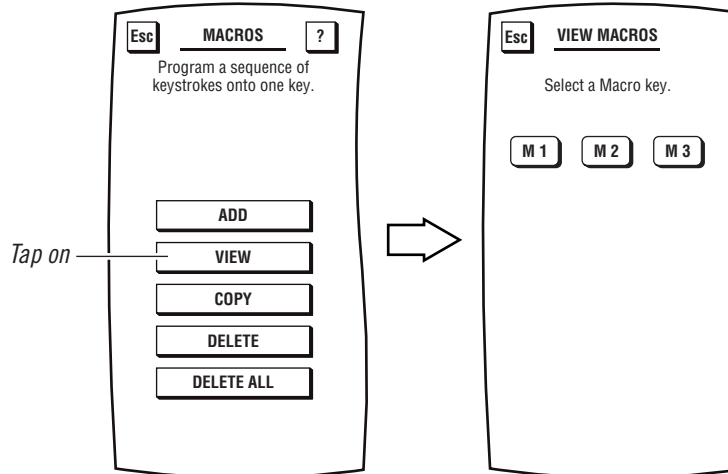
VIEWING MACROS

To see what commands are stored in a macro, perform the following steps:

1. On the *Device Screen* in the upper left corner, tap on **Setup**. You will see the main *SETUP Menu* that greets you and asks, "What would you like to configure?"
2. Tap on the **PERSONALIZATION** key. You will see the *PERSONALIZATION Menu*.

*NOTE: To return to a previous menu, tap on the **ESC** key. To return to last-displayed Device Screen, press down on **ESC** or **MUTE** for at least 2 seconds. For Macro help, tap the **?** key.*

3. Tap on the **MACROS** key. You will see the main *MACROS Menu*.
4. Tap on the **VIEW** key. You will see the *VIEW MACROS Menu*.



5. Tap on any displayed **Macro** key (e.g., **M1**, **M2**, etc.). You will see the commands that make up the selected macro. To return to previous menu, tap on the **ESC** key. To return to the *Device Screen*, press down on **ESC** or **MUTE** for at least 2 seconds.

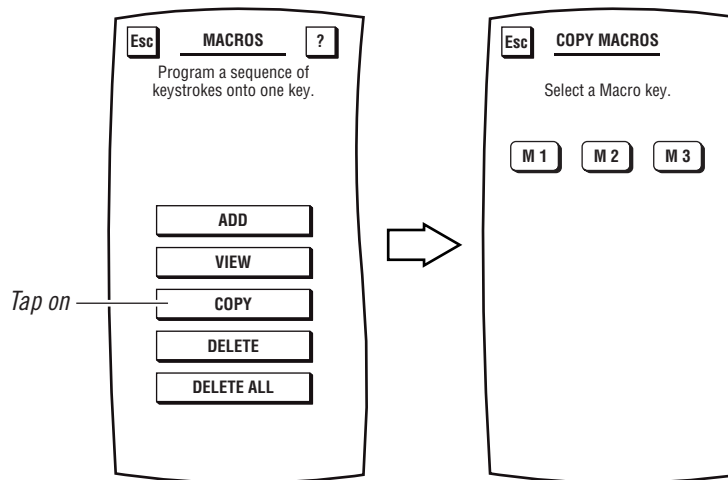
MOSAIC

USING MACROS (continued)

COPYING MACROS

To copy a macro, perform the following steps:

1. On the *Device Screen* in the upper left corner, tap on **Setup**. You will see the main *SETUP Menu* that greets you and asks, “What would you like to configure?”
2. Tap on the **PERSONALIZATION** key. You will see the *PERSONALIZATION Menu*.
NOTE: To return to a previous menu, tap on the ESC key. To return to last-displayed Device Screen, press down on ESC or MUTE for at least 2 seconds. For Macro help, tap the ? key.
3. Tap on the **MACROS** key. You will see the main *MACROS Menu*.
4. Tap on the **COPY** key. You will see the *COPY MACROS Menu*.



5. Tap on the macro key you want to copy. Mosaic will ask you where you want to copy the macro.
 - To have it appear on all *Device Screens*, tap on the **ALL DEVICES** key. You will see a row of up to four empty keys appear which correspond to the space directly below *Device Selection Strip*. Tap on any empty key to assign it or tap on an existing one to override it. Mosaic will display a confirmation screen.

USER'S GUIDE

- To have it appear on a specific *Device Screen*, tap on the **SPECIFIC DEVICE** key. You will see the last-displayed *Device Screen*. Using the *Device Selection Strip*, tap the desired device key. If needed, tap the left/right scroll arrows to view other device choices. The *Device Screen* will display all keys on all pages for the selected device. Tap on any empty key and Mosaic will display a confirmation screen.

*NOTE: To return to a previous menu, tap on the **ESC** key. To return to last-displayed Device Screen, press down on **ESC** or **MUTE** for at least 2 seconds. For Macro help, tap the **?** key.*

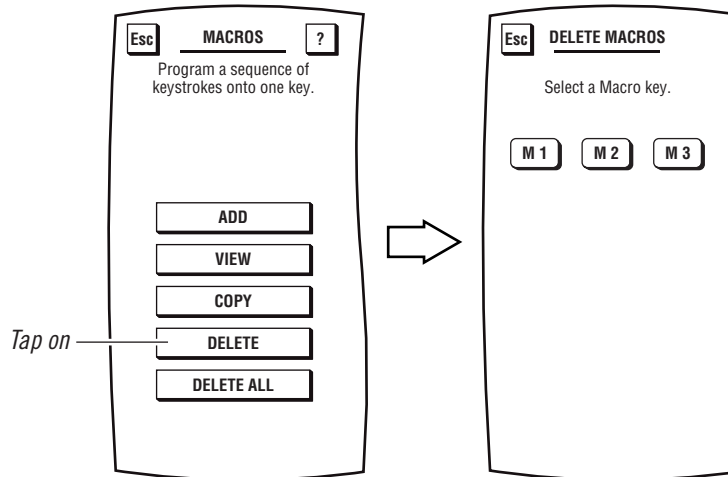
DELETING A MACRO

To delete a single macro, perform the following steps:

- On the *Device Screen* in the upper left corner, tap on **Setup**. You will see the main *SETUP Menu* that greets you and asks, "What would you like to configure?"
- Tap on the **PERSONALIZATION** key. You will see the *PERSONALIZATION Menu*.

*NOTE: To return to a previous menu, tap on the **ESC** key. To return to last-displayed Device Screen, press down on **ESC** or **MUTE** for at least 2 seconds. For Macro help, tap the **?** key.*

- Tap on the **MACROS** key. You will see the main *MACROS Menu*.
- Tap on the **DELETE** key. You will see the *DELETE MACROS Menu*.



continued on next page...

MOSAIC

USING MACROS

DELETING A MACRO (CONTINUED)

5. Tap on the **Macro** key you want to delete. You will see a confirmation screen that says the macro key has been successfully deleted from all device screens and the main *MACROS Menu*.

*NOTE: Use **VIEW/DELETE** (see “Chapter 4: Personalizing Mosaic – Using View/Delete” on page 65) to delete macros from Device Screens but keep them intact on the main *MACROS Menu* for future copying.*

To delete another macro key, tap on the **ESC** key to return to the *DELETE MACROS Menu*, or press down on **ESC** or **MUTE** for at least 2 seconds to return to the last-displayed *Device Screen*.

DELETING ALL MACROS

To delete all macros, perform the following steps:

1. On the *Device Screen* in the upper left corner, tap on **Setup**. You will see the main *SETUP Menu* that greets you and asks, “What would you like to configure?”

2. Tap on the **PERSONALIZATION** key. You will see the *PERSONALIZATION Menu*.

*NOTE: To return to a previous menu, tap on the **ESC** key. To return to last-displayed *Device Screen*, press down on **ESC** or **MUTE** for at least 2 seconds. For Macro help, tap the **?** key.*

3. Tap on the **MACROS** key. You will see the main *MACROS Menu*.
4. Tap on the **DELETE ALL** key. Mosaic will ask you to confirm your choice (as shown on the next page).

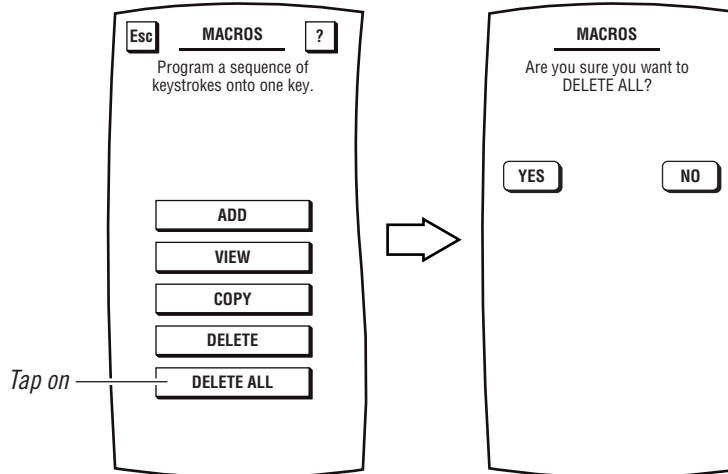
- To delete all macros, tap on the **YES** key. You will see a confirmation screen that says all macros have been successfully deleted on all device screens and the main *MACROS Menu*. Tap on the **ESC** key to return to the *DELETE MACROS Menu*.

*NOTE: Use **VIEW/DELETE** (see “Chapter 4: Personalizing Mosaic – Using View/Delete” on page 65) to delete macros from Device Screens but keep them intact on the main *MACROS Menu* for future copying.*

- To cancel deletion of all macros, tap on the **NO** key. Mosaic will return to the main *MACROS Screen*. If you want to delete a single macro, see the previous section, *Deleting A Macro* on page 45, or see *Using View/Delete* on page 65.

*NOTE: To return to a previous menu, tap on the **ESC** key. To return to last-displayed *Device Screen*, press down on **ESC** or **MUTE** for at least 2 seconds. For Macro help, tap the **?** key.*

USER'S GUIDE



USING KEY MOVER

Mosaic also includes our patented *Key Mover* feature that allows keys to be copied from one device to another, or to a different position in the same device mode. However, there are some considerations:

- A moved key is actually a copy of the original key which can never be deleted.
- A moved key will always be rectangular, even though the original version may be a different shape.
- A moved key retains the original label, but it can be relabeled.
- The *Key Mover* feature only works on IR function keys.

MOVING A KEY

As an instruction aid, we'll create an example that copies the **TV/VID** key from *TV Device Screen* and adds it to the *CBL Device Screen*.

1. On the *Device Screen* in the upper left corner, tap on **Setup**. You will see the main *SETUP Menu* that greets you and asks, "What would you like to configure?"
2. Tap on the **PERSONALIZATION** key. You will see the *PERSONALIZATION Menu*.

*NOTE: To return to a previous menu, tap on the **ESC** key. To return to last-displayed Device Screen, press down on **ESC** or **MUTE** for at least 2 seconds. For Macro help, tap the **?** key.*

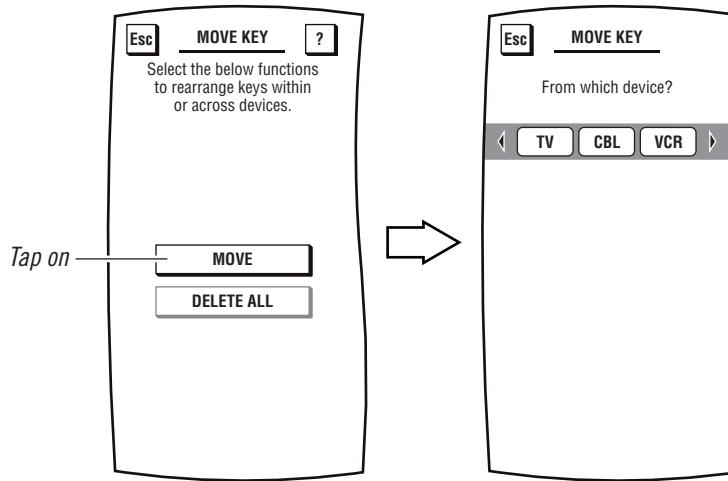
continued on next page...

MOSAIC

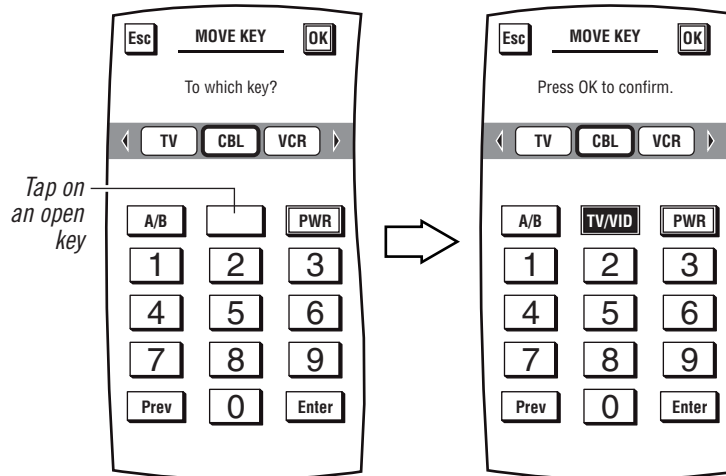
USING KEY MOVER

MOVING A KEY (CONTINUED)

3. Tap on the **MOVE KEY** key. You will see the *MOVE KEY Menu*.
4. Tap on the **MOVE** key. You will see the *Device Selection Strip* and Mosaic asks you to choose a device from which to move a key.



5. Tap on a desired device key. For our example, tap on the **TV** key. Mosaic will ask you to choose a key to be moved.
6. Tap on the key you want moved. If needed, tap on the **Page Arrow** keys to view other pages for the selected device. For our example, tap on the **TV/VID** key. Again you will see the *Device Selection Strip*, but this time Mosaic asks you to choose a device where the key will be moved to.
7. Tap on a desired device key. For our example, tap on the **CBL** key. Mosaic will ask you to choose a key.
8. Tap on an empty key. If needed, tap on the **Page Arrow** keys to view other pages for the selected device. For our example, tap on the empty key located between the **A/B** and **PWR** keys. You will see the copied key pasted in place of the empty key, as shown on the next page.

USER'S GUIDE


9. To confirm your choice, tap on the **OK** key. To cancel the move, tap on the **ESC** key.
10. After confirming the move, Mosaic will ask if you want to relabel the moved key.
 - To keep the label the same, tap on the **NO** key. In our example, we'll keep the same label, **TV/VID**.
 - To relabel the copied key, tap on the **YES** key. You will see the *MOVE KEY Label Screen*. Follow the procedure that is similar to the one starting with step 3 on page 54 to relabel the key and tap the **OK** key when you're done.
11. You will see a confirmation screen that says the key has been successfully programmed. To program a function of the same type, tap on the **ESC** key. To return to the *Device Screen*, press on **ESC** or **MUTE** for at least 2 seconds.

MOSAIC

USING KEY MOVER (continued)

DELETING ALL MOVED KEYS

1. On the *Device Screen* in the upper left corner, tap on **Setup**. You will see the main *SETUP Menu* that greets you and asks, “*What would you like to configure?*”
2. Tap on the **PERSONALIZATION** key. You will see the *PERSONALIZATION Menu*.

*NOTE: To return to a previous menu, tap on the **ESC** key. To return to last-displayed Device Screen, press down on **ESC** or **MUTE** for at least 2 seconds. For Key Mover help, tap the **?** key.*

3. Tap on the **MOVE** key. You will see the *MOVE KEY Menu*.
4. Tap on the **DELETE ALL** key. Mosaic will ask you to confirm your choice.
 - To delete all moved keys, tap on the **YES** key. You will see a confirmation screen that says all moved keys have been successfully deleted. Tap on the **ESC** key to return to the *MOVE KEY Screen*.
 - To cancel deletion of all moved keys, tap on the **NO** key. Mosaic will return to the *MOVE KEY Screen*. If you want to delete a single move key, see *Using View/Delete* on page 65.

*NOTE: To return to a previous menu, tap on the **ESC** key. To return to last-displayed Device Screen, press down on **ESC** or **MUTE** for at least 2 seconds. For Key Mover help, tap the **?** key.*

USER'S GUIDE

USING LEARNING

Like all sophisticated remote controls, Mosaic includes a *Learning* feature so you can easily add a function from another remote control, assign it a special key, label that key, and place it on the screen of your choice.

However, there are some considerations:

- Learning is allowed only for device function keys, not system keys.
- A learned key can replace an existing pre-defined key or a blank key.
- A learned key can be learned onto a soft or hard key.

NOTE: Although a learned key can be learned onto a hard key, it will interfere with the original function of that key. Only make this choice when a hard key is not being used by a device (e.g., VOL keys for a CD Changer).

- A learned key will always be rectangular, even though the original version may be a different shape.
- If desired, a learned key can be relabeled.

LEARNING A FUNCTION

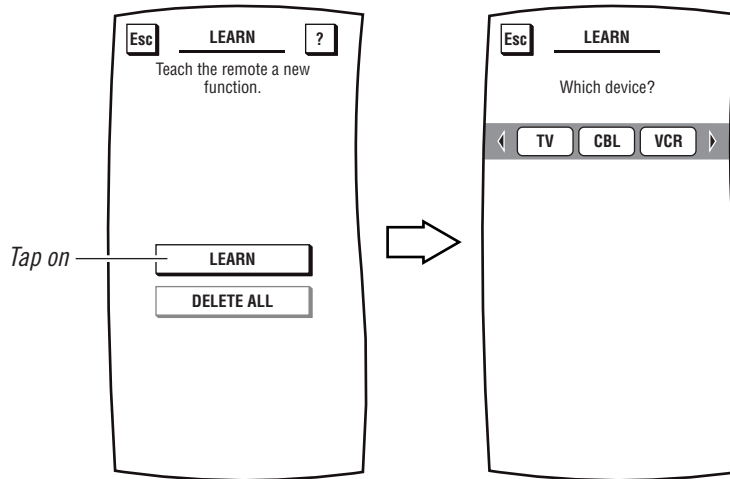
1. On the *Device Screen* in the upper left corner, tap on **Setup**. You will see the main *SETUP Menu* that greets you and asks, "What would you like to configure?" as shown on the next page.
2. Tap on the **PERSONALIZATION** key. You will see the *PERSONALIZATION Menu*.
NOTE: To return to a previous menu, tap on the ESC key. To return to last-displayed Device Screen, press down on ESC or MUTE for at least 2 seconds. For Learning help, tap the ? key.
3. Tap on the **LEARN** key. You will see the *LEARN Menu*.
4. Tap on the **LEARN** key again. You will see the *Device Selection Strip* (as shown on the next page) and Mosaic asks you to choose a device that will be taught.

continued on next page ...

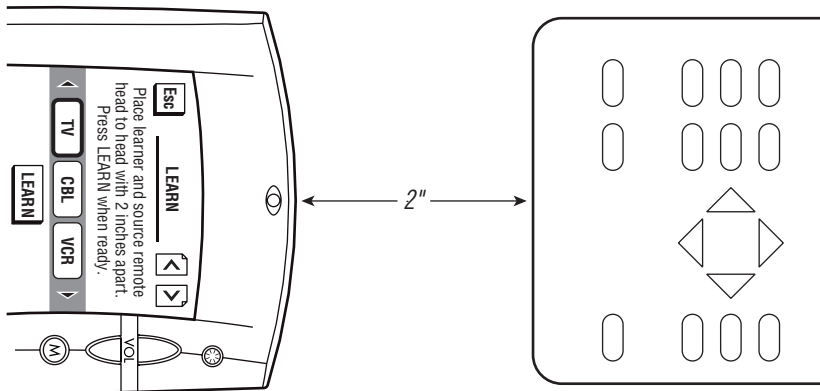
MOSAIC

USING LEARNING

LEARNING A FUNCTION (CONTINUED)



5. Tap on a desired device key. You will see its *Device Screen* and Mosaic asks you to select a function key that will be learned onto. If needed, tap on the **Page Arrow** keys to view other pages for the selected device.
6. Tap on a desired function key – it can be pre-defined or blank. A **LEARN** key will appear and Mosaic will ask you to place your original remote control, head-to-head, within 2 inches of Mosaic, as shown below.



USER'S GUIDE

7. Tap on the **LEARN** key. Mosaic will turn on its LED and display a *Learning* message. On the original remote control, press and hold down the key you want learned. When the LED turns off, a confirmation message will appear stating that the IR codes from your original remote control were successfully captured.

NOTE: If you hear a dual-tone audio beep, Mosaic will display an error message stating that the IR codes were not captured. Mosaic will ask you to repeat the procedure again.

8. Tap on the **OK** key to accept the capture. Mosaic will ask you if want to relabel the function key (as selected in step 6).
 - To relabel the function key, tap on the **YES** key. You will see the *LEARN Label Screen*. Follow the procedure that is similar to the one starting with step 3 on page 54 to relabel the key and tap the **OK** key when you're done.
 - To keep the label the same, tap on the **NO** key.
9. You will see a confirmation screen that says the key has been successfully programmed. To program a function of the same type, tap on the **ESC** key. To return to the *Device Screen*, press on **ESC** or **MUTE** for at least 2 seconds.

NOTE: Be sure to test the learned function to see if it works. If not, repeat the procedure.

DELETING ALL LEARNED FUNCTIONS

1. On the *Device Screen* in the upper left corner, tap on **Setup**. You will see the main *SETUP Menu* that greets you and asks, "What would you like to configure?"
2. Tap on the **PERSONALIZATION** key. You will see the *PERSONALIZATION Menu*.

*NOTE: To return to a previous menu, tap on the **ESC** key. To return to last-displayed Device Screen, press down on **ESC** or **MUTE** for at least 2 seconds. For Learning help, tap the **?** key.*

3. Tap on the **LEARN** key. You will see the *LEARN Menu*.
4. Tap on the **DELETE ALL** key. Mosaic will ask you to confirm your choice.
 - To delete all learned keys, tap on the **YES** key. You will see a confirmation screen that says all learned keys have been successfully deleted. Tap on the **ESC** key to return to the *LEARN Screen*.
 - To cancel deletion of all learned functions, tap on the **NO** key. Mosaic will return to the *LEARN Screen*. If you want to delete a single learned key, see *Using View/Delete* on page 65.

*NOTE: To return to a previous menu, tap on the **ESC** key. To return to last-displayed Device Screen, press down on **ESC** or **MUTE** for at least 2 seconds. For Learning help, tap the **?** key.*

MOSAIC

LABELING KEYS

Mosaic provides a labeling program that you can use to label new device or function keys and relabel existing ones. Here are some considerations:

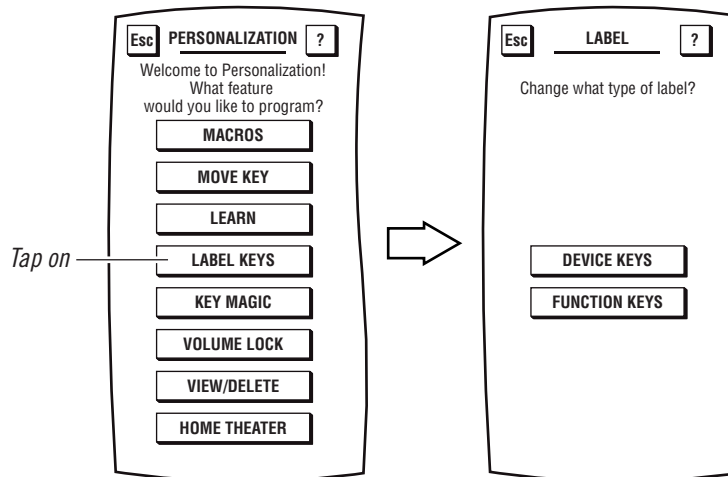
- Mosaic provides a simple alphanumeric keyboard, yet it contains **SHIFT**, **CAPS LOCK**, **SPACE**, and **BACKSPACE** keys, as well as symbol characters.
- Only labels for IR function keys and device keys can be altered or edited.

LABELING DEVICE KEYS

1. On the *Device Screen* in the upper left corner, tap **Setup**. You will see the main *SETUP Menu* that greets you and asks, “What would you like to configure?”
2. Tap on the **PERSONALIZATION** key. You will see the *PERSONALIZATION Menu*.

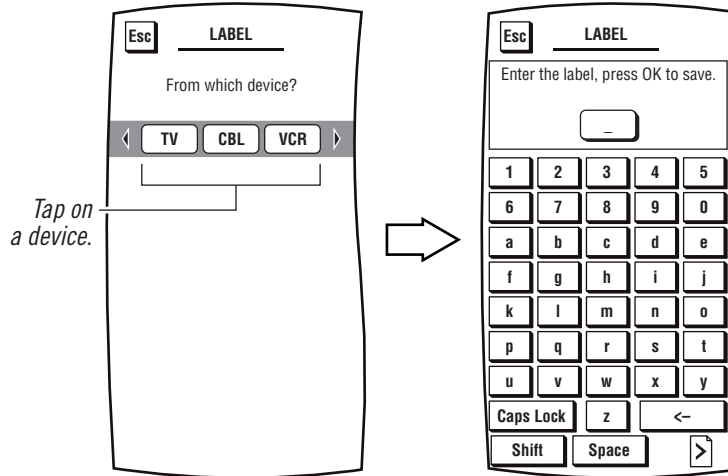
*NOTE: To return to a previous menu, tap on the **ESC** key. To return to last-displayed Device Screen, press down on **ESC** or **MUTE** for at least 2 seconds. For Labeling help, tap the **?** key.*

3. Tap on the **LABEL KEYS** key. You will see the *LABEL Menu*.



4. Tap on the **DEVICE KEYS** key. You will see the *Device Selection Strip*, and Mosaic asks you to choose a device you want to relabel.
5. Tap on a desired device key. You will see the *LABEL Screen*, as shown on the next page.

USER'S GUIDE



6. Enter a desired label using the alphanumeric keypad. Depending on the characters being entered, the label can be as short as four or as long as eight characters.
 - For uppercase letters, tap on the **SHIFT** or **CAPS LOCK** key.
 - To access two pages of symbols, tap on the **Page Arrow** key.
 - Tap on the **SPACE** key to enter a space.
 - To reenter a character, tap on the **<-** key.
7. To save your device label, tap on the **OK** key. Mosaic will show a confirmation message saying that the label was successfully programmed.

*NOTE: To return to the LABEL Menu, tap on the **ESC** key. To return to last-displayed Device Screen, press down on **ESC** or **MUTE** for at least 2 seconds. For Labeling help, tap the **?** key.*

LABELING FUNCTION KEYS

1. On the *Device Screen* in the upper left corner, tap on **Setup**. You will see the main *SETUP Menu* that greets you and asks, "What would you like to configure?"
2. Tap on the **PERSONALIZATION** key. You will see the *PERSONALIZATION Menu*.

*NOTE: To return to a previous menu, tap on the **ESC** key. To return to last-displayed Device Screen, press down on **ESC** or **MUTE** for at least 2 seconds. For Labeling help, tap the **?** key.*

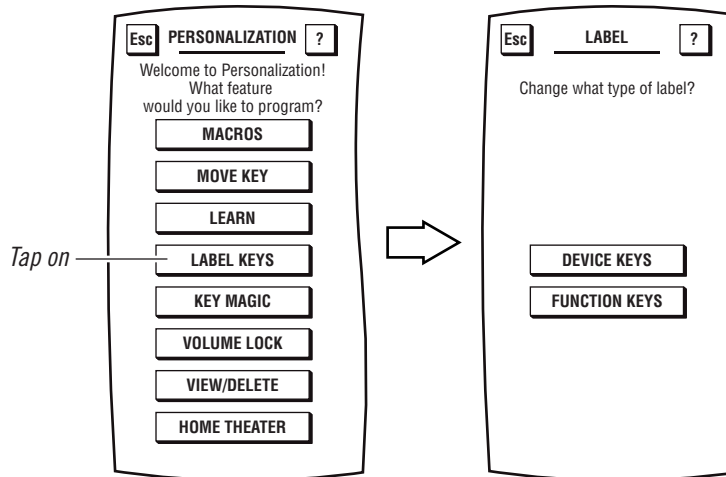
continued on next page..

MOSAIC

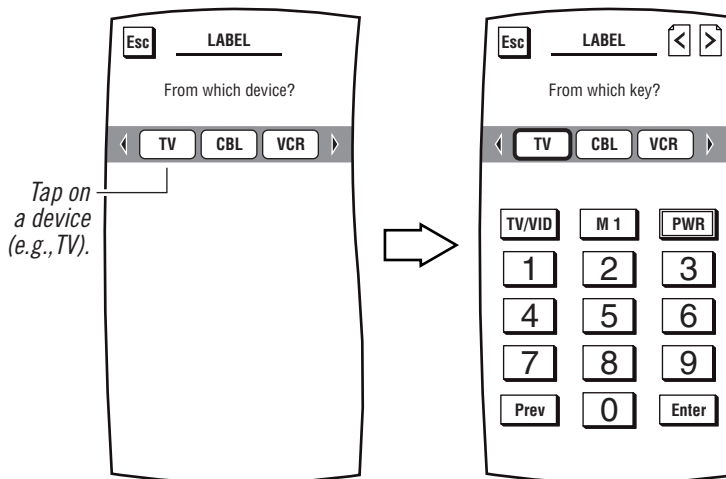
LABELING KEYS

LABELING FUNCTION KEYS (CONTINUED)

3. Tap on the **LABEL KEYS** key. You will see the *LABEL Menu*.

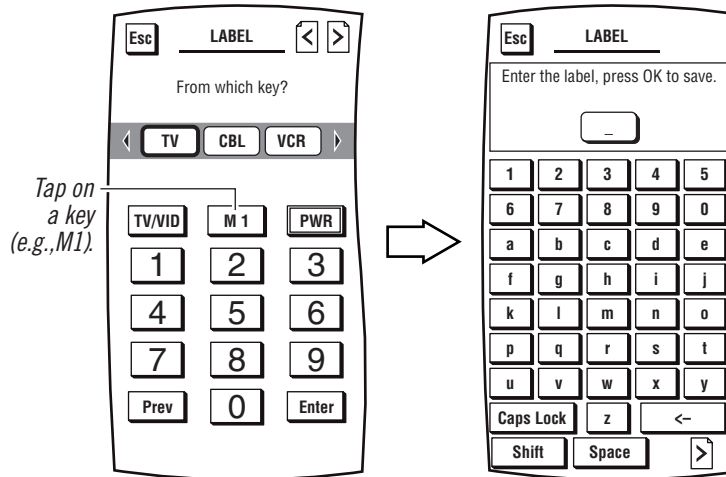


4. Tap on the **FUNCTION KEYS** key. You will see the *Device Selection Strip*, and Mosaic asks you to choose a device that contains the function key(s) you want to relabel.
5. Tap on a desired device key. You will see its *Device Screen*.



USER'S GUIDE

6. Tap on a desired function key. You will see the *LABEL Screen*.



7. Enter a desired label using the alphanumeric keypad. Depending on the characters being entered, the label can be as short as four or as long as eight characters.
- For uppercase letters, tap on the **SHIFT** or **CAPS LOCK** key.
 - To access two pages of symbols, tap on the **Page Arrow** key.
 - Tap on the **SPACE** key to enter a space.
 - To reenter a character, tap on the **<-** key.
8. To save your function label, tap on the **OK** key. Mosaic will show a confirmation message saying that the label was successfully programmed.

*NOTE: To return to the LABEL Menu, tap on the **ESC** key. To return to last-displayed Device Screen, press down on **ESC** or **MUTE** for at least 2 seconds. For Labeling help, tap the **?** key.*

MOSAIC

USING KEY MAGIC

Mosaic provides users with an alternative way to add functional codes to keys through our patented *Key Magic* feature. Although Mosaic includes the world's largest infrared code library, you may find an advanced function that is not available on Mosaic, yet still exists on your original remote control. Using *Key Magic* and our Web site (see *Chapter 5: Mosaic System – About Mosaic* on page 82), you can obtain a code that you can use to add the advanced feature to the device screen.

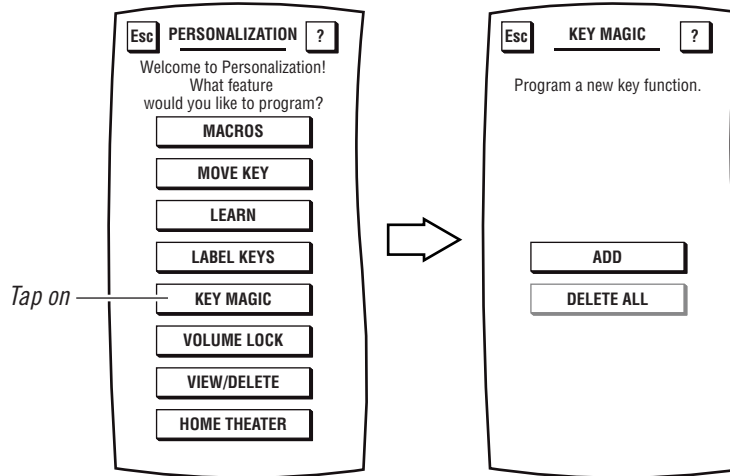
However, there are some considerations:

- Use the *Key Magic* feature if you don't have access to the original remote control. Otherwise, use *Learning* (see “*Using Learning*” on page 51) and the original remote control to learn the missing function onto Mosaic.
- A *Key Magic* key will always be rectangular even though the original version may be a different shape.
- A *Key Magic* key retains its original *Key Magic* number, but it can be relabeled.
- The *Key Magic* feature only works on IR function keys.

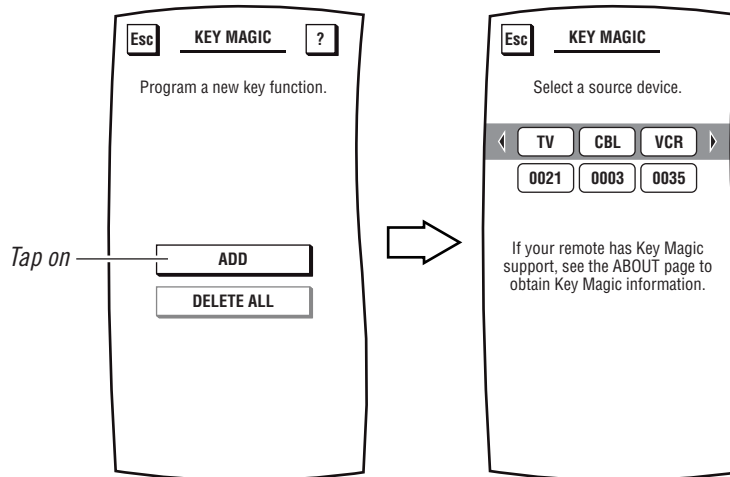
ADDING A KEY MAGIC FUNCTION

1. On the *Device Screen* in the upper left corner, tap on **Setup**. You will see the main *SETUP Menu* that greets you and asks, “*What would you like to configure?*”
2. Tap on the **PERSONALIZATION** key. You will see the *PERSONALIZATION Menu*.
*NOTE: To return to a previous menu, tap on the **ESC** key. To return to last-displayed Device Screen, press down on **ESC** or **MUTE** for at least 2 seconds. For Key Magic help, tap the **?** key.*
3. Tap on the **KEY MAGIC** key. You will see the *KEY MAGIC Menu*, as shown on the next page.

USER'S GUIDE



4. Tap on the **ADD** key. You will see the *KEY MAGIC Device Selection Strip*.



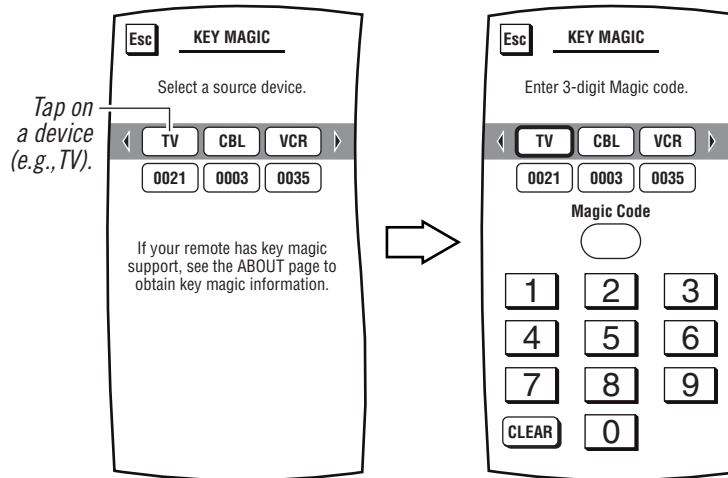
5. Tap on a desired device. Mosaic will ask you to enter the 3-digit Magic Code, as shown on the next page.
6. Make a note of the 4-digit code listed under selected device and call our customer support group (see *Chapter 5: Mosaic System – About Mosaic* on page 82). You will be supplied with the correct 3-digit code for the function you want to add.

continued on next page

MOSAIC

USING KEY MAGIC

ADDING A KEY MAGIC FUNCTION (CONTINUED)



7. Using the keypad, enter the 3-digit code. Mosaic will ask you to test the *Key Magic* function. Aim Mosaic at the selected device and tap on the **TEST** key.
8. If the device responds correctly, tap on the **OK** key. You will see the *KEY MAGIC Device Selection Strip* and Mosaic will ask on which device you want to store the new function.
9. Tap on a desired device. You will see its *Device Screen* and Mosaic will ask on which key do you want to store the new function.
10. To assign the function, tap on any desired key. To accept the change, tap on the **OK** key. Mosaic will ask if you want to relabel the function key.
 - To relabel the function key, tap on the **YES** key. You will see the *KEY MAGIC Label Screen*. Follow the procedure that is similar to the one starting with step 3 on page 54 to relabel the key and tap the **OK** key when you're done.
 - To keep the label the same, tap on the **NO** key.
11. You will see a confirmation screen that says the key has been successfully programmed. To program a function of the same type, tap on the **ESC** key. To return to the *Device Screen*, press on **ESC** or **MUTE** for at least 2 seconds.

USER'S GUIDE

DELETING ALL KEY MAGIC FUNCTIONS

1. On the *Device Screen* in the upper left corner, tap on **Setup**. You will see the main *SETUP Menu* that greets you and asks, "What would you like to configure?"
2. Tap on the **PERSONALIZATION** key. You will see the *PERSONALIZATION Menu*.

*NOTE: To return to a previous menu, tap on the **ESC** key. To return to last-displayed Device Screen, press down on **ESC** or **MUTE** for at least 2 seconds. For Key Magic help, tap the **?** key.*

3. Tap on the **KEY MAGIC** key.
4. Tap on the **DELETE ALL** key. Mosaic will ask you to confirm your choice.
 - To delete all Key Magic keys, tap on the **YES** key. You will see a confirmation screen that says all Key Magic keys have been successfully deleted. Tap on the **ESC** key to return to the *KEY MAGIC Screen*.
 - To cancel deletion of all Key Magic keys, tap on the **NO** key. Mosaic will return to the *KEY MAGIC Screen*. If you want to delete a single Key Magic key, see *Using View/Delete* on page 65.

*NOTE: To return to a previous menu, tap on the **ESC** key. To return to last-displayed Device Screen, press down on **ESC** or **MUTE** for at least 2 seconds. For Key Magic help, tap the **?** key.*

MOSAIC

USING VOLUME LOCK

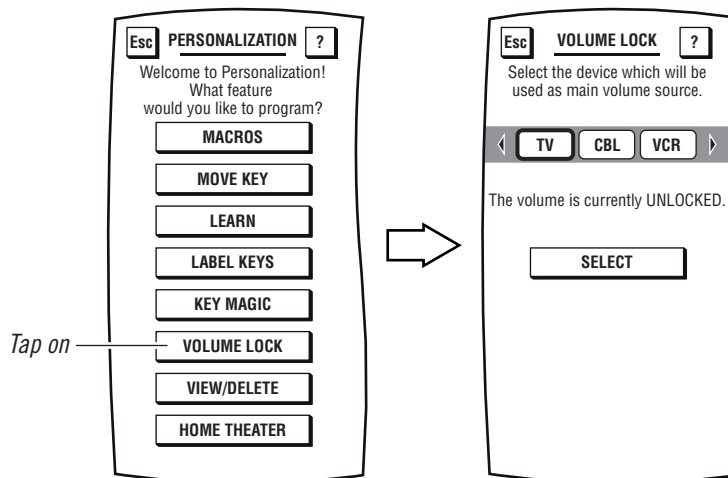
In its default state, Mosaic allows each device to control its own volume. However, using our *Volume Lock* feature, you can set Mosaic to conveniently control volume of one or more devices (e.g., Cable Box and VCR) through a single device (e.g., TV).

LOCKING THE VOLUME

1. On the *Device Screen* in the upper left corner, tap on **Setup**. You will see the main *SETUP Menu* that greets you and asks, “What would you like to configure?”
2. Tap on the **PERSONALIZATION** key. You will see the *PERSONALIZATION Menu*.

*NOTE: To return to a previous menu, tap on the **ESC** key. To return to last-displayed Device Screen, press down on **ESC** or **MUTE** for at least 2 seconds. For Volume Lock help, tap the **?** key.*

3. Tap on the **VOLUME LOCK** key. You will see the *VOLUME LOCK Menu*.

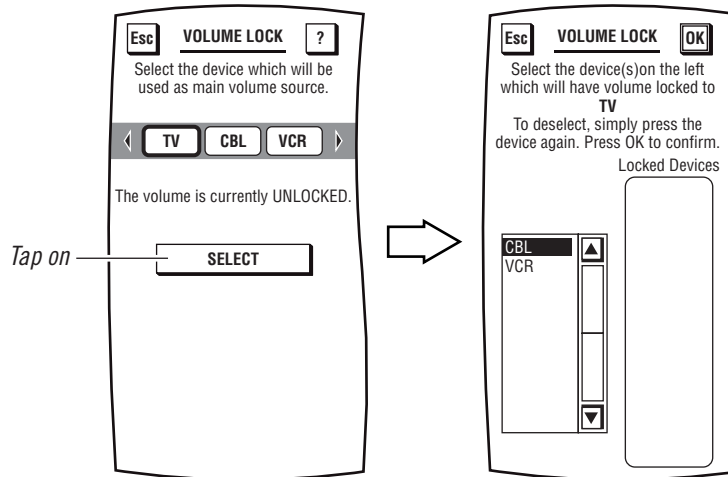


4. On the *Device Selection Strip*, tap on the device you want as main volume source (e.g., **TV**) for a group of related devices (e.g., **VCR** and **CBL**). You will see a message stating that the TV volume is currently unlocked.

NOTE: If the TV volume is locked, tap on another device or unlock the selected device (see “Unlocking the Volume” on page 64).

USER'S GUIDE

5. Tap on the **SELECT** key. You will see the *Device VOLUME LOCK Menu*.



6. In the left column, tap on a device you want locked (e.g., **VCR**) to the main volume source (e.g., **TV**) originally selected in step 4. You will see the device (e.g., **VCR**) being added to the *Locked Devices* list on the right.

NOTE: To remove a device from the Locked Devices list, tap again on the device in the left column.

7. Repeat step 6 for each additional device (e.g., **CBL**) you want locked to the main volume source. If needed, use the scroll up/down arrows in the left column to view additional devices.
8. To save your selections, tap on the **OK** key. Mosaic will show a confirmation message saying that your *Volume Lock* function was successfully programmed.

*NOTE: To return to the previous menu, tap on the **ESC** key. To return to last-displayed Device Screen, press down on **ESC** or **MUTE** for at least 2 seconds. For Volume Lock help, tap the **?** key.*

MOSAIC

USING VOLUME LOCK (continued)

UNLOCKING THE VOLUME

1. On the *Device Screen* in the upper left corner, tap **Setup**. You will see the main *SETUP Menu* that greets you and asks, “*What would you like to configure?*”
2. Tap on the **PERSONALIZATION** key. You will see the *PERSONALIZATION Menu*.
NOTE: To return to a previous menu, tap on the ESC key. To return to last-displayed Device Screen, press down on ESC or MUTE for at least 2 seconds. For Volume Lock help, tap the ? key.
3. Tap on the **VOLUME LOCK** key. You will see the *VOLUME LOCK Menu*.
4. On the *Device Selection Strip*, tap on the device you want unlocked. You will see a message stating that the selected device is currently locked.
5. Tap on the **SELECT** key. You will see the *Device VOLUME LOCK Menu*.
6. In the left column, tap on a device you want unlocked from the main volume source. You will see the device being removed from the *Locked Devices* list on the right.
7. Repeat step 6 for each additional device you want unlocked from the main volume source. If needed, use the scroll up/down arrows in the left column to view additional devices.
8. To save your selections, tap on the **OK** key. Mosaic will show a confirmation message saying that your *Volume Lock* function was successfully programmed.

NOTE: To return to the previous menu, tap on the ESC key. To return to last-displayed Device Screen, press down on ESC or MUTE for at least 2 seconds. For Volume Lock help, tap the ? key.

USER'S GUIDE

USING VIEW/DELETE

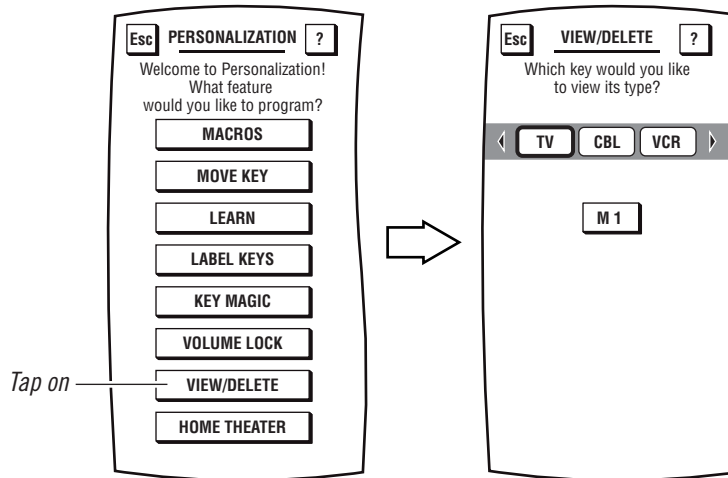
To help you review what personalized changes have been made, Mosaic includes a program that allows you to view the functions by device and to selectively delete any one.

1. On the *Device Screen* in the upper left corner, tap on **Setup**. You will see the main *SETUP Menu* that greets you and asks, "What would you like to configure?"

2. Tap on the **PERSONALIZATION** key. You will see the *PERSONALIZATION Menu*.

*NOTE: To return to a previous menu, tap on the **ESC** key. To return to last-displayed Device Screen, press down on **ESC** or **MUTE** for at least 2 seconds. For View/Delete help, tap the **?** key.*

3. Tap on the **VIEW/DELETE** key. You will see the *VIEW/DELETE Device Selection Strip*.



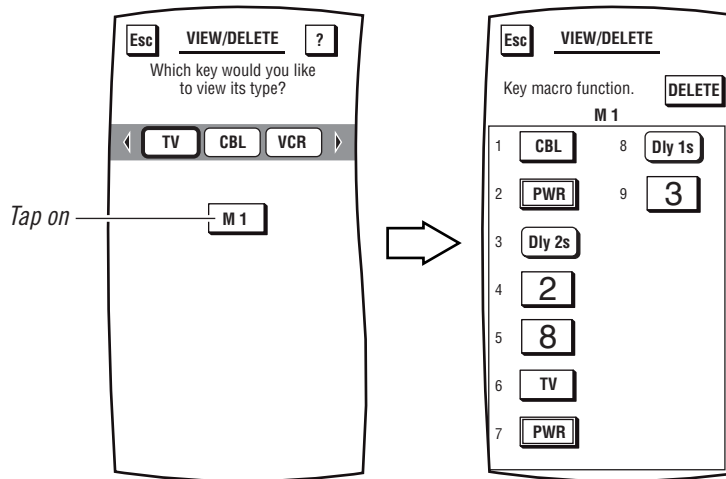
4. Tap on a desired device. You will see all personalized functions for the device. In the illustration above, **M1** is an example macro key that was created in the section, *Adding A Macro*, starting on page 39.

continued on next page

MOSAIC

USING VIEW/DELETE (continued)

5. The *View/Delete* program will list all *Macros* and *Moved, Learned, and Key Magic* keys. Tap on any key to view a description. In the following illustration, tapping on **M1** shows the recorded keys used to create the example macro key in *Adding A Macro*, starting on page 39.



- To delete a personalized function, tap on the **DELETE** key. Mosaic will delete it and show a confirmation message saying that you have successfully programmed your personalization function.
- To keep a personalized function, tap on the **ESC** or **MUTE** key. Mosaic will return to the *View/Delete Screen*.

USER'S GUIDE

HOME THEATER

Although you may think Home Theater is an independent device mode, it is actually a programmed composite of the most-frequently-used home-theater functions taken from the devices configured in Mosaic. This composite screen is accessed via a dedicated soft key, labeled **THEATER**, at the top of all *Device Screens*. When it is tapped, Mosaic will display your selected functions including any related macros.

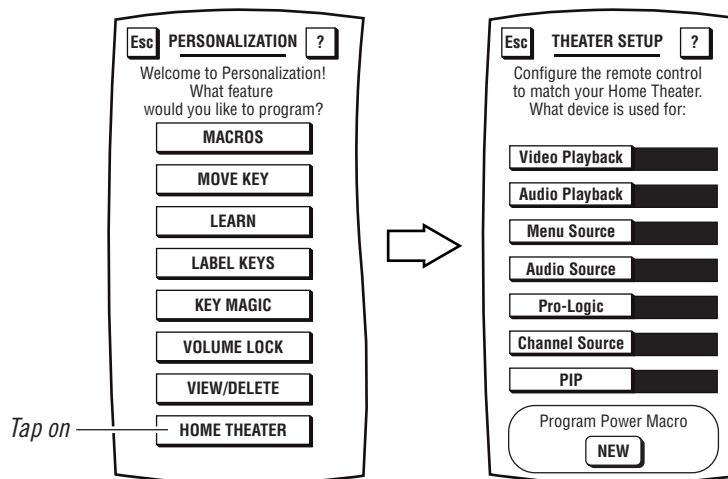
Home Theater also allows you to program a separate “Power On” macro that will power on all your favorite home theater devices with the tap of a single key.

PROGRAMMING HOME THEATER DEVICES

1. On the *Device Screen* in the upper left corner, tap on **Setup**. You will see the main *SETUP Menu* that greets you and asks, “What would you like to configure?”
2. Tap on the **PERSONALIZATION** key. You will see the *PERSONALIZATION Menu*.

*NOTE: To return to a previous menu, tap on the **ESC** key. To return to last-displayed Device Screen, press down on **ESC** or **MUTE** for at least 2 seconds. For Home Theater help, tap the **?** key.*

3. Tap on the **HOME THEATER** key. You will see seven device categories listed in the *THEATER SETUP Menu*.



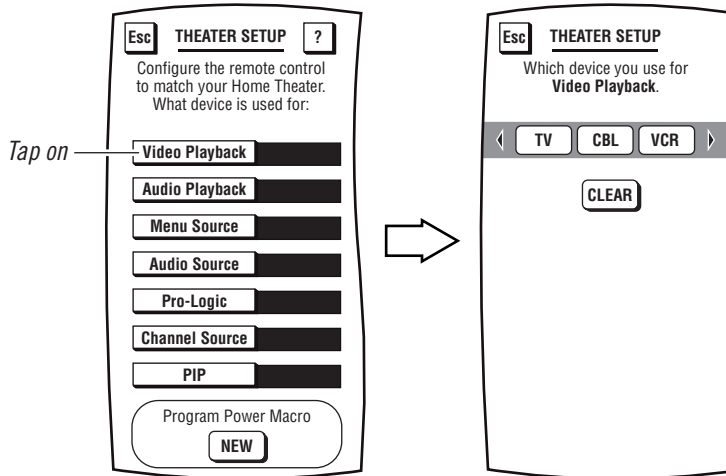
4. Tap on the **Video Playback** key. You will see the *THEATER SETUP Device Selection Strip*, as shown on the next page.

continued on next page ...

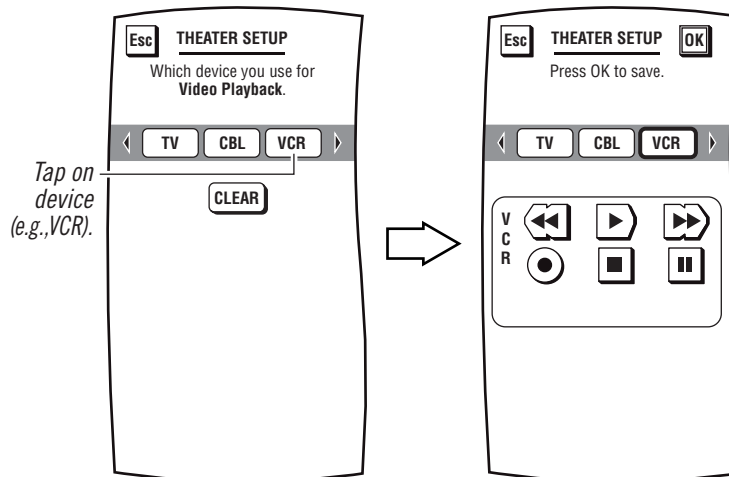
MOSAIC

HOME THEATER

PROGRAMMING HOME THEATER DEVICES (CONTINUED)



5. Tap on the device you want to set up as your video playback device (e.g., **VCR**). If you select a device that has a transport (e.g., **VCR**), necessary control keys will be added to the display. To make a different selection, tap on the **ESC** key and repeat this step.

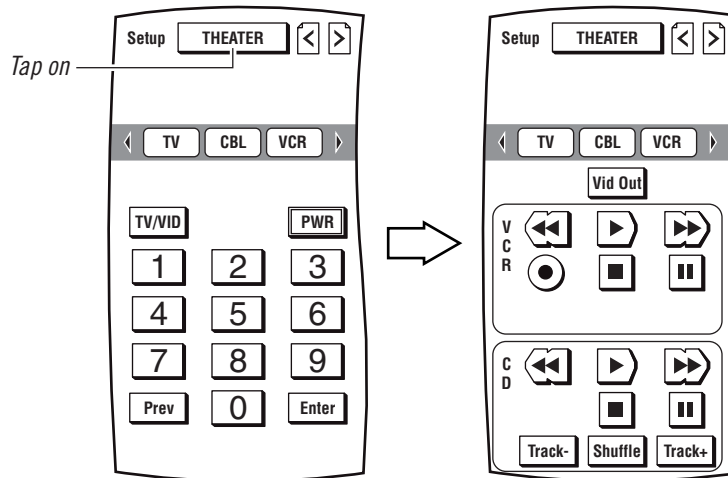


USER'S GUIDE

6. To save your selection, tap on the **OK** key. Mosaic will return to the *Theater Setup Screen*.
7. Repeat steps 4 through 6 (starting on page 67) for all remaining device categories. When you're finished, continue onto the next section to program a Home Theater "Power On" macro.

*NOTE: To return to a previous menu, tap on the **ESC** key. To return to last-displayed Device Screen, press down on **ESC** or **MUTE** for at least 2 seconds. For Home Theater help, tap the **?** key.*

8. If you want to test Home Theater, press down on **ESC** or **MUTE** for 2 seconds to return to the last-displayed *Device Screen*. Then tap on the **THEATER** Key to see the composite screen (see below example).



NOTE: Depending on the devices you program, the Home Theater composite screen on your Mosaic may look different than the one shown in the example above.

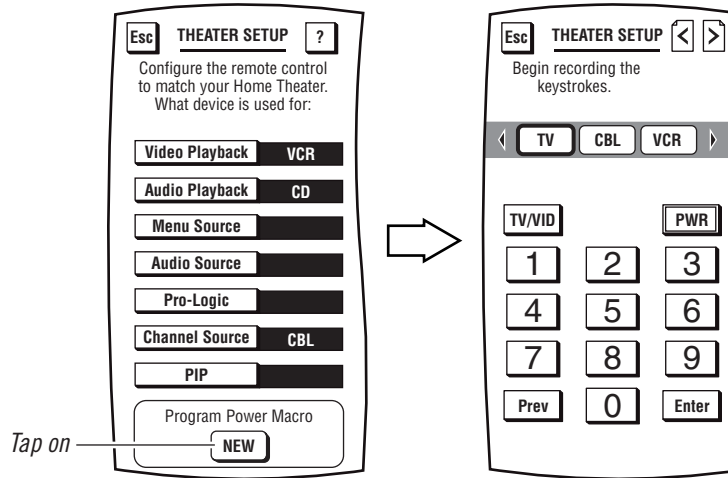
MOSAIC

HOME THEATER (continued)

PROGRAMMING THE HOME THEATER POWER MACRO

1. If necessary, perform steps 1 through 3 of the previous section (*Programming Home Theater Devices* on page 67) to view the *Theater Setup Menu*.
2. In the *Program Power Macro sub-menu*, tap on the **NEW** key. You will see the *THEATER SETUP Device Selection Strip*.

NOTE: Tapping on the NEW key will also override any previously-programmed Power Macro.



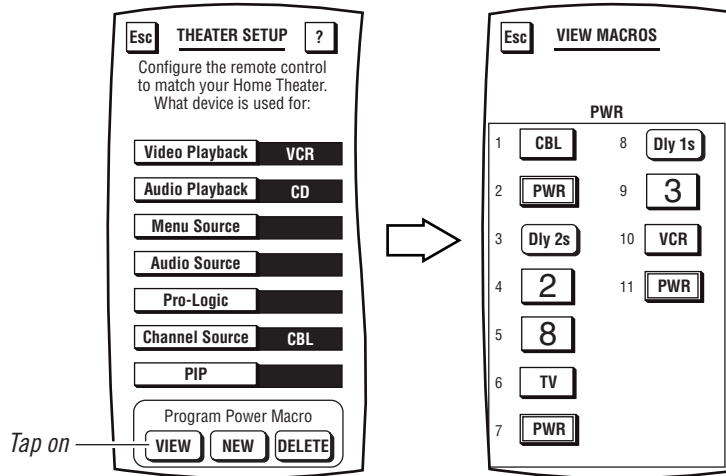
3. Using a procedure similar to the one described in *Adding A Macro* (starting on page 39), tap on successive devices and their functions to program the macro.
4. After you have programmed the macro, aim Mosaic at your Home Theater system and tap on the **TEST** key. If the devices respond incorrectly, tap on the **CLEAR** key and repeat steps 3 and 4.
5. If the devices do respond correctly, then tap the **OK** key to save the macro. Mosaic will ask you if you want to relabel the macro.
 - To relabel the macro, tap on the **YES** key. You will see the *THEATER SETUP Label Screen*. Follow the procedure that is similar to the one starting with step 3 on page 54 to relabel the macro and tap the **OK** key when you're done.
 - To keep the macro labeled as **PWR**, tap on the **NO** key.

USER'S GUIDE

- Mosaic will return to the *THEATER SETUP Menu*. To return to the *Personalization Menu*, tap on the **ESC** key. To return to the *Device Screen*, press on **ESC** or **MUTE** for at least 2 seconds.

VIEWING THE HOME THEATER POWER MACRO

- If necessary, perform steps 1 through 3 of *Programming Home Theater Devices* (on page 67) to view the *Theater Setup Menu*.
- In the *Program Power Macro sub-menu*, tap on the **VIEW** key. You will see the *VIEW MACROS Menu* which will display the contents of the current Power Macro, as shown in the below example.



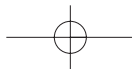
- To return to *Theater Setup Menu*, tap on the **ESC** key. To return to the *Device Screen*, press on **ESC** or **MUTE** for at least 2 seconds.

DELETING THE HOME THEATER POWER MACRO

- If necessary, perform steps 1 through 3 of *Programming Home Theater Devices* (on page 67) to view the *Theater Setup Menu*.
- In the *Program Power Macro sub-menu*, tap on the **DELETE** key. Mosaic will clear the current Power Macro and display a **NEW** key to create a new macro.

MOSAIC

NOTES



Chapter 5: Mosaic System

OVERVIEW

This chapter shows you how to use Mosaic's system utilities for *Upgrading Codes*, *Touch Screen Alignment*, *Sound Control*, *Lock Settings*, *User Reset*, and *About Mosaic*. At the end of the chapter, you also will find Mosaic's specifications.

UPGRADING CODES

Although Mosaic includes the world's largest infrared code library (which is compatible with virtually every infrared device being made), there may come a time when Mosaic will require an upgrade, especially when you purchase a new device. Fortunately, Mosaic includes electro-magnetic coupling technology that allows downloading by modem for an "in home" consumer upgrade using your PC speakers or telephone.

UPGRADING CODES USING YOUR PC

To use your home computer for downloading, the following requirements must be met:

- Your PC must be equipped with a sound card and speakers.
- Netscape 4.0 (or higher) or Microsoft Internet Explorer (4.0 or higher) is required.
- Your browser must include a plug-in that will play sound files.
- Our program will ask for permission to write to your local hard drive. Granting permission will speed up your download.
- At least 1 MB of available hard disk space is required on your "C: Drive."

If you don't have access to a computer system with the above requirements, then skip this section and perform the instructions in *Upgrading Codes Using Your Telephone*, starting on page 76.

1. On the *Device Screen* in the upper left corner, tap on **Setup**. You will see the main *SETUP Menu* (as shown on the next page) that greets you and asks, "What would you like to configure?"

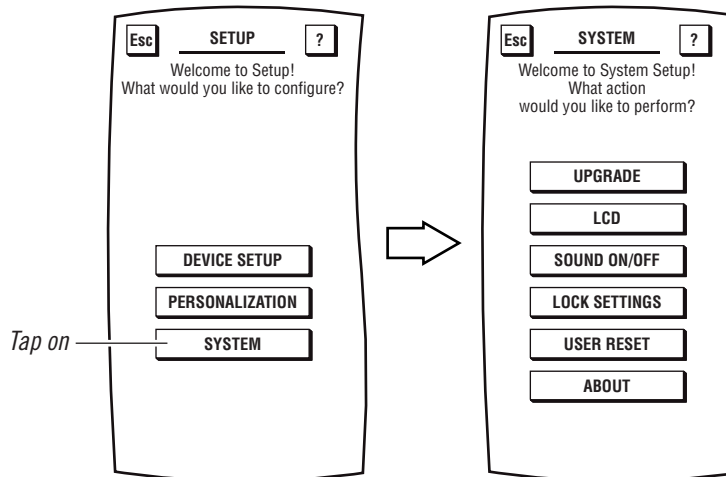
continued on next page...

MOSAIC

UPGRADING CODES

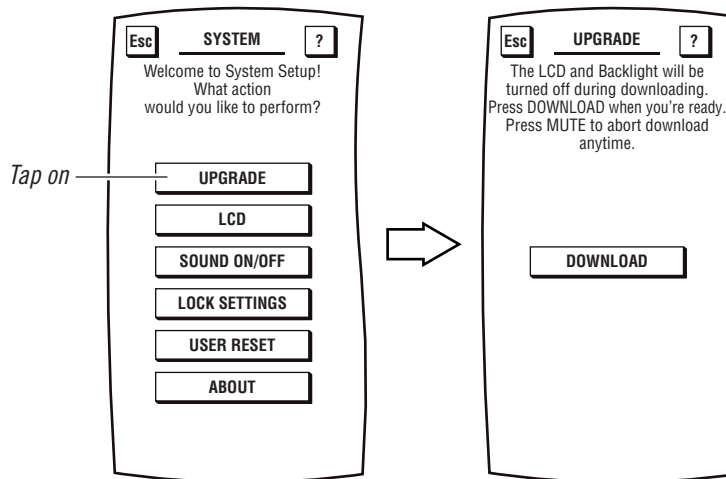
UPGRADING CODES USING YOUR PC (CONTINUED)

2. Tap on the **SYSTEM** key. You will see the *SYSTEM Menu*.



*NOTE: To return to a previous menu, tap on the **ESC** key. To return to last-displayed Device Screen, press down on **ESC** or **MUTE** for at least 2 seconds. For Upgrading Codes help, tap the **?** key.*

3. Tap on the **UPGRADE** key. You will see the *UPGRADE Menu*.



USER'S GUIDE

- Using your home PC and an Internet browser, connect to the Internet and navigate to our web site (see *Chapter 5: Mosaic System – About Mosaic* on page 82). Then click on **Support** and look for the download page. There you will find instructions on selecting a device, setting up the Mosaic for the download, and performing the download. To get a better idea of the procedure, read all instructions before actually starting the download.

NOTE: You can download codes for more than one device as long as the memory download indicator is not full (i.e., less than 100 %).

IMPORTANT: Be aware that each new download will erase previously downloaded codes that are not being used in a device setup.

- When you're ready for downloading, tap on the **DOWNLOAD** key on Mosaic's *UPGRADE Menu*. Mosaic's LED will turn on. Place Mosaic so its lower rear half is against the middle of a speaker and try to keep it steady. Continue following the on-line Internet instructions to start the download.

*NOTE: During download, Mosaic's LCD and backlight will turn off. The LED should blink periodically if the codes being received are valid. If the LED is off or remains on steadily, the data is invalid. In that case, press the **M (Mute)** key to stop the download and repeat this step.*

- When the download is complete, you will no longer hear sound coming from the speaker, and Mosaic's LED will turn off. Then an *UPGRADE Test Menu* will appear on Mosaic where you can test device codes that were downloaded.
- Follow the on-screen instructions to find a downloaded code that will work for the selected device. Test each code until you find one that works. Then tap on the **OK** key to add the new code. You will see a confirmation screen. Tap on the **ESC** key to return to the *UPGRADE Menu*. Repeat steps 4 to 7 for each device you want to upgrade.

NOTE: If none of the codes work, repeat steps 4 through 7 and try the download again. If the codes still don't work after several tries, contact customer support for additional help. Be aware that each new download will erase previously downloaded codes that are not being used in a device setup.

MOSAIC

UPGRADING CODES (continued)

UPGRADING CODES USING YOUR TELEPHONE

1. Before calling our customer service line, write down and have the following information ready at hand:
 - Mosaic model number
 - Software version number (as listed in *About Mosaic* screen – see page 82)
 - Brand and model number of device you want to upgrade
 - The year the device was manufactured
2. Perform steps 1 through 3 in the previous section, *Upgrading Codes Using Your PC* on pages 73 and 74.
3. Call our customer service line (see *About Mosaic* on page 82) and provide the customer service representative with the information requested in step 1 above.
4. Tap on the **DOWNLOAD** key. When the LED turns on, tell the customer service representative. Place Mosaic so its lower rear half is against the middle of the telephone's earpiece and keep it steady.

*NOTE: During download, the LED should blink periodically if the codes being received are valid. If the LED is off or remains on steadily, the data is invalid. In that case, press the **M (Mute)** key to stop the download and repeat this step.*

5. Stay on the line with the customer service representative after the download is complete (i.e., LED turns off). A *Download Screen* will appear that contains all the upgraded devices. Carefully read its instructions to test the device to see if the new downloaded codes work. If not, repeat step 4 and try again.

ALIGNING THE LCD

After Mosaic has been used awhile, a soft key may no longer produce a response when you tap inside a key's boundary, yet it still works when you tap outside it. To compensate for this drift, Mosaic includes a utility program that you can use to align the LCD back to factory specifications.

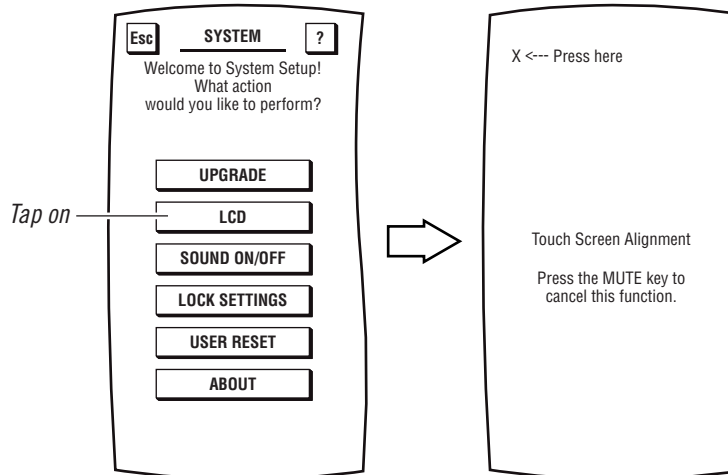
1. On the *Device Screen* in the upper left corner, tap on **Setup**. You will see the main *SETUP Menu* that greets you and asks, "What would you like to configure?"

*NOTE: If the LCD is so misaligned, if by tapping on **Setup** you do not see the main *SETUP Menu*, skip steps 1 through 3 and instead press the **CH -**, **MUTE**, and **VOL +** hard keys, all at the same time. This will cause Mosaic to go directly to the *LCD ALIGNMENT Menu*. Then start with step 4 on the next page.*

2. Tap on the **SYSTEM** key. You will see the *SYSTEM Menu*, as shown on the next page.

*NOTE: To return to a previous menu, tap on the **ESC** key. To return to last-displayed *Device Screen*, press down on **ESC** or **MUTE** for at least 2 seconds. For LCD Alignment help, tap the **?** key.*

3. Tap on the **LCD** key. You will see the *LCD ALIGNMENT Menu*.



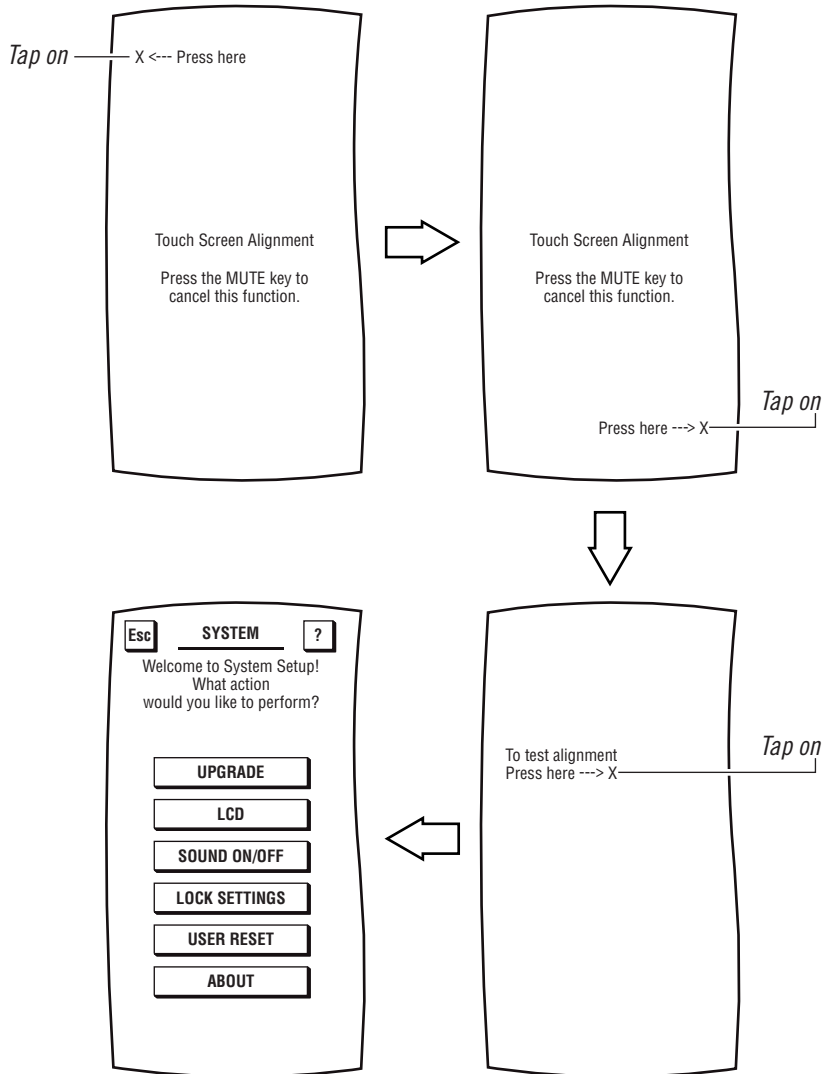
continued on next page...

MOSAIC

ALIGNING THE LCD (continued)

- Following the instructions, tap on the **X** on each of the three screens shown below. When the procedure is complete, the LCD will be aligned and Mosaic will return to the *System Menu*.

*NOTE: To cancel the procedure at anytime, press the **MUTE** key.*



USER'S GUIDE

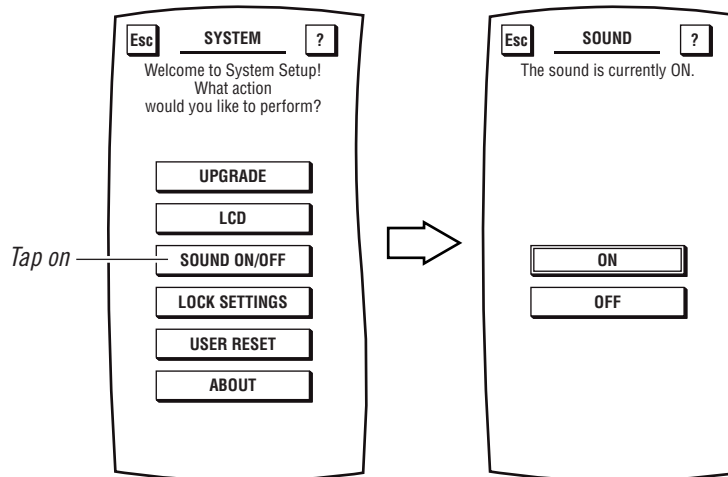
SOUND CONTROL

Mosaic is set at the factory to emit a beep and blink the LED each time you tap a key. To turn the beep sound off (or back on), perform the following procedure:

1. On the *Device Screen* in the upper left corner, tap on **Setup**. You will see the main *SETUP Menu* that greets you and asks, "What would you like to configure?"
2. Tap on the **SYSTEM** key. You will see the *SYSTEM Menu*.

*NOTE: To return to a previous menu, tap on the **ESC** key. To return to last-displayed Device Screen, press down on **ESC** or **MUTE** for at least 2 seconds. For Sound Control help, tap the **?** key.*

3. Tap on the **SOUND ON/OFF** key. You will see the *SOUND Menu* with the current setting denoted by a thicker outline.



- To turn off the beep sound, tap on the **OFF** key. Mosaic will turn off the beep sound and return to the *System Menu*.
- To turn on the beep sound, tap on the **ON** key. Mosaic will turn on the beep sound and return to the *System Menu*.

NOTE: As an additional low-battery warning, Mosaic will emit a beep sound even if the sound is turned off (see "Chapter 1: Getting Started – About Batteries" on page 11).

MOSAIC

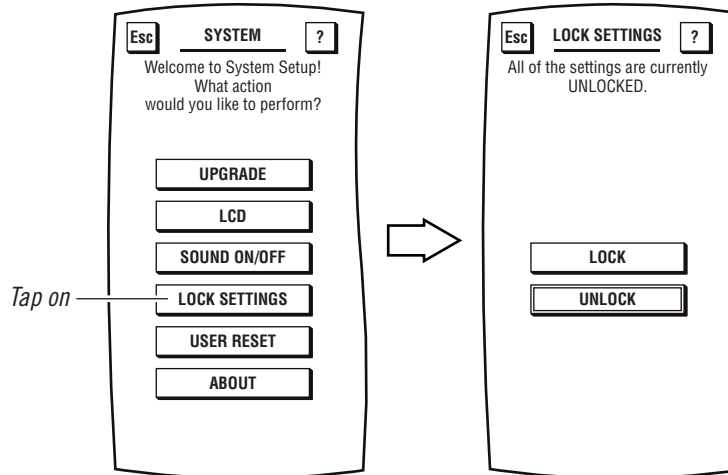
LOCK SETTINGS

Mosaic is set at the factory with settings unlocked. After setting up Mosaic, we recommend locking the new settings to keep them from being inadvertently erased or changed.

1. On the *Device Screen* in the upper left corner, tap on **Setup**. You will see the main *SETUP Menu* that greets you and asks, “What would you like to configure?”
2. Tap on the **SYSTEM** key. You will see the *SYSTEM Menu*.

*NOTE: To return to a previous menu, tap on the **ESC** key. To return to last-displayed *Device Screen*, press down on **ESC** or **MUTE** for at least 2 seconds. For Lock Settings help, tap the **?** key.*

3. Tap on the **LOCK SETTINGS** key. You will see the *LOCK SETTINGS Menu* with the current setting denoted by a thicker outline.



- To lock the settings, tap on the **LOCK** key. Mosaic will lock the settings and return to the last-displayed *Device Screen*.
- To unlock the settings, tap on the **UNLOCK** key. Mosaic will unlock the settings and return to the *SYSTEM Menu*.

RESETTING THE SYSTEM

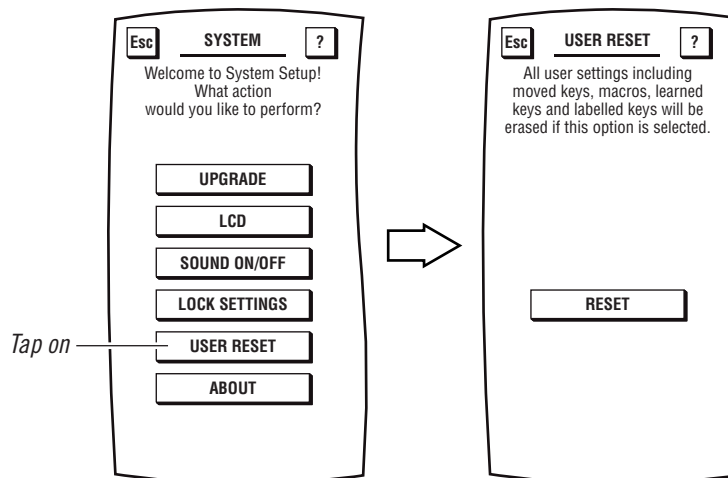
If you have updated your entertainment devices or want to completely start over, Mosaic offers a user reset function so you can clear settings using a single command.

IMPORTANT: *User Reset does not affect downloaded codes or Device Setup settings. To reset only all user settings including Macros, Moved Keys, Learned Keys, Labeled Keys, and Key Magic functions, as well as all settings for Home Theater, Sound On/Off, Volume Lock, and Lock to their original default values, perform the following steps:*

1. On the *Device Screen* in the upper left corner, tap on **Setup**. You will see the main *SETUP Menu* that greets you and asks, "What would you like to configure?"
2. Tap on the **SYSTEM** key. You will see the *SYSTEM Menu*.

NOTE: To return to a previous menu, tap on the **ESC** key. To return to last-displayed *Device Screen*, press down on **ESC** or **MUTE** for at least 2 seconds. For User Reset help, tap the **?** key.

3. Tap on the **USER RESET** key. You will see the *USER RESET Menu*.



4. To erase all user settings, tap on the **RESET** key. You will hear a beep as Mosaic clears all settings. After a few seconds, Mosaic will show a confirmation message saying that you have successfully programmed your personalization function.

NOTE: To return to the *SYSTEM Menu*, tap on the **ESC** key. To return to last-displayed *Device Screen*, press down on **ESC** or **MUTE** for at least 2 seconds. For User Reset help, tap the **?** key.

MOSAIC

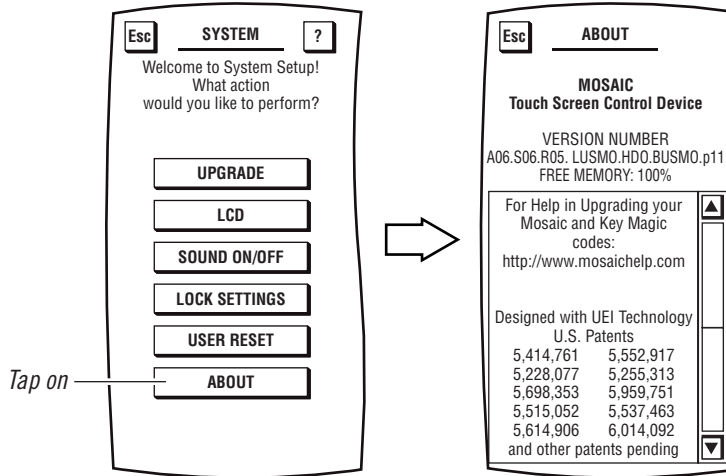
ABOUT MOSAIC

The *About Screen* lists Mosaic's software version, the amount of free memory, and contact information for additional help.

1. On the *Device Screen* in the upper left corner, tap on **Setup**. You will see the main *SETUP Menu* that greets you and asks, "What would you like to configure?"
2. Tap on the **SYSTEM** key. You will see the *SYSTEM Menu*.

*NOTE: To return to a previous menu, tap on the **ESC** key. To return to last-displayed Device Screen, press down on **ESC** or **MUTE** for at least 2 seconds. For System help, tap the **?** key.*

3. Tap on the **ABOUT** key. You will see the *ABOUT Menu*.



USER'S GUIDE

SPECIFICATIONS

MATERIALS:

- Plastics: High-impact polystyrene (HIPS), housing dark gray, four IR emitting LEDs covered with red polycarbonate lens, one visible LED for user feedback
- Hard keypad: Compression-molded silicon rubber
- LCD resolution: 160 x 240 pixels, with integral touch screen and back lighting.
- Stylus and housing
- Designed for the consumer/ home environment

DIMENSIONS:

- Height: 7.25 inches
- Width: 3.6 inches
- Depth: 1.5 inches
- Active touch screen area: 2.3 by 4 inches

POWER SUPPLY:

- Uses (4) AA Alkaline batteries
- Battery compartment includes date code label.

TRANSMIT RANGE:

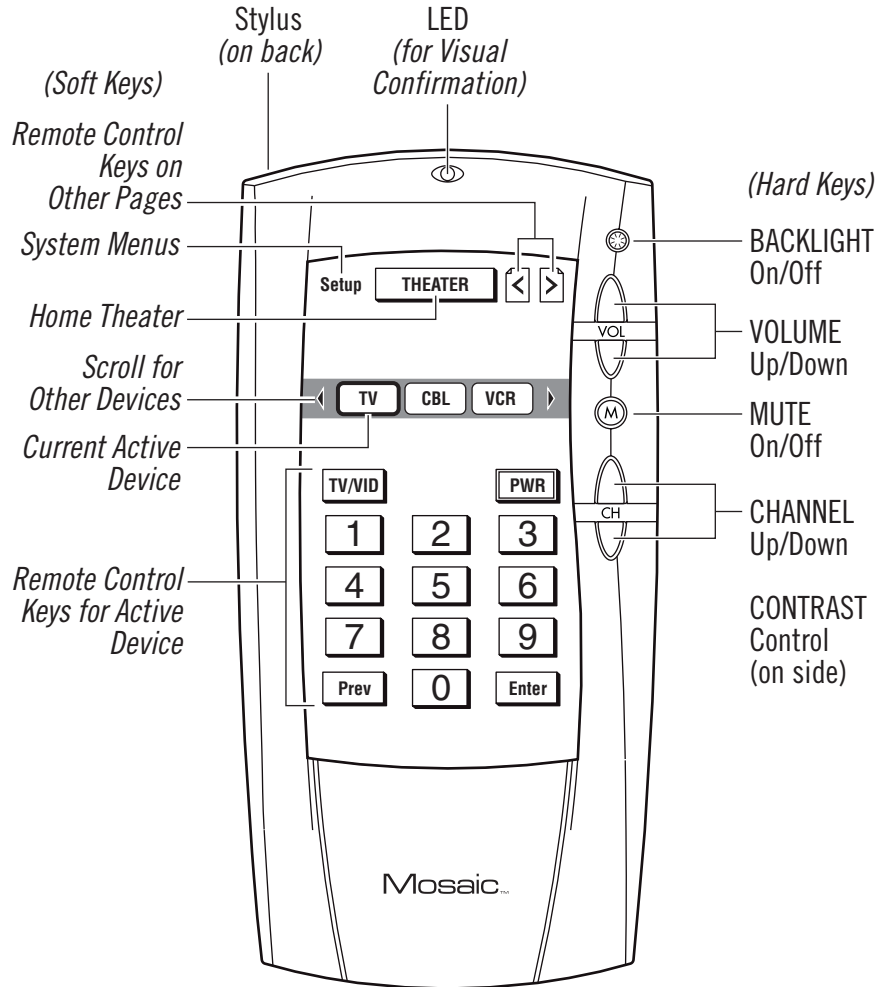
- Direct line to target: 29 feet (horizontal plane)
- Remote off center: 19.7 feet

WARRANTY:

- 1 year repair or replacement under normal use
- 1 year on silk screen printing

MOSAIC
NOTES

QUICK REFERENCE





1864 Enterprise Parkway W.
Twinsburg, OH 44087

VOICE: (330) 405-8600

FAX: (330) 487-1131

www.uei.com